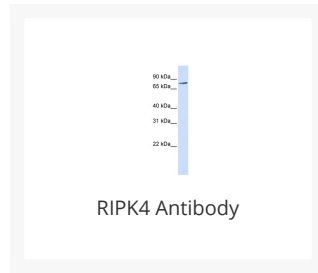




RIPK4 Antibody

Cat. No.: 26-084



Ψ Specifications

HOST SPECIES:	Rabbit
SPECIES REACTIVITY:	Human
IMMUNOGEN:	Antibody produced in rabbits immunized with a synthetic peptide corresponding a region of human RIPK4.
TESTED APPLICATIONS:	ELISA, WB
APPLICATIONS:	RIPK4 antibody can be used for detection of RIPK4 by ELISA at 1:12500. RIPK4 antibody can be used for detection of RIPK4 by western blot at 1 µg/mL, and HRP conjugated secondary antibody should be diluted 1:50,000 - 100,000.
POSITIVE CONTROL:	1) 293T Cell Lysate
PREDICTED MOLECULAR WEIGHT:	86 kDa

Ψ Properties

PURIFICATION:	Antibody is purified by peptide affinity chromatography method.
CLONALITY:	Polyclonal
CONJUGATE:	Unconjugated
PHYSICAL STATE:	Liquid

BUFFER:	Purified antibody supplied in 1x PBS buffer with 0.09% (w/v) sodium azide and 2% sucrose.
CONCENTRATION:	batch dependent
STORAGE CONDITIONS:	For short periods of storage (days) store at 4 °C. For longer periods of storage, store RIPK4 antibody at -20 °C. As with any antibody avoid repeat freeze-thaw cycles.

Additional Info

OFFICIAL SYMBOL:	RIPK4
ALTERNATE NAMES:	RIPK4, ANKK2, ANKRD3, DIK, MGC129992, MGC129993, PKK, RIP4, PPS2, NKRD3
ACCESSION NO.:	NP_065690
PROTEIN GI NO.:	41327754
GENE ID:	54101
USER NOTE:	Optimal dilutions for each application to be determined by the researcher.

Background and References

BACKGROUND:	RIPK4 is a serine/threonine protein kinase that interacts with protein kinase C-delta. The protein can also activate NFkappaB and is required for keratinocyte differentiation. This kinase undergoes autophosphorylation. The protein encoded by this gene is a serine/threonine protein kinase that interacts with protein kinase C-delta. The encoded protein can also activate NFkappaB and is required for keratinocyte differentiation. This kinase undergoes autophosphorylation.
REFERENCES:	1) Kim, S.W., (2008) Blood 111 (3), 1644-1653.

ANTIBODIES FOR RESEARCH USE ONLY.

For additional information, visit ProSci's [Terms & Conditions Page](#).