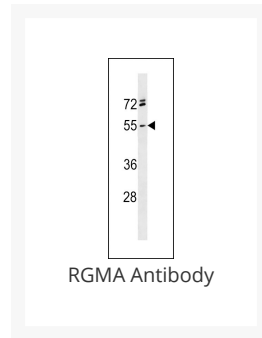




# RGMA Antibody

Cat. No.: 60-366



## Ψ Specifications

<b>HOST SPECIES:</b>	Rabbit
<b>SPECIES REACTIVITY:</b>	Human
<b>IMMUNOGEN:</b>	This RGMA antibody is generated from rabbits immunized with a KLH conjugated synthetic peptide between 390-418 amino acids from the C-terminal region of human RGMA.
<b>TESTED APPLICATIONS:</b>	WB
<b>APPLICATIONS:</b>	For WB starting dilution is: 1:1000
<b>PREDICTED MOLECULAR WEIGHT:</b>	49 kDa

## Ψ Properties

<b>PURIFICATION:</b>	This antibody is purified through a protein A column, followed by peptide affinity purification.
<b>CLONALITY:</b>	Polyclonal
<b>ISOTYPE:</b>	Rabbit Ig
<b>CONJUGATE:</b>	Unconjugated

<b>PHYSICAL STATE:</b>	Liquid
<b>BUFFER:</b>	Supplied in PBS with 0.09% (W/V) sodium azide.
<b>CONCENTRATION:</b>	batch dependent
<b>STORAGE CONDITIONS:</b>	Store at 4 °C for three months and -20 °C, stable for up to one year. As with all antibodies care should be taken to avoid repeated freeze thaw cycles. Antibodies should not be exposed to prolonged high temperatures.

## Additional Info

<b>OFFICIAL SYMBOL:</b>	RGMA
<b>ALTERNATE NAMES:</b>	Repulsive guidance molecule A, RGM domain family member A, RGMA, RGM
<b>ACCESSION NO.:</b>	Q96B86
<b>PROTEIN GI NO.:</b>	296452979
<b>GENE ID:</b>	56963
<b>USER NOTE:</b>	Optimal dilutions for each application to be determined by the researcher.

## Background and References

<b>BACKGROUND:</b>	This gene encodes a member of the repulsive guidance molecule family. The encoded protein is a glycosylphosphatidylinositol-anchored glycoprotein that functions as an axon guidance protein in the developing and adult central nervous system. This protein may also function as a tumor suppressor in some cancers. Alternate splicing results in multiple transcript variants.
<b>REFERENCES:</b>	1) Nohra, R., et al. Genes Immun. 11(4):279-293(2010)
	2) Severyn, C.J., et al. Biochem. J. 422(3):393-403(2009)
	3) Li, V.S., et al. Gastroenterology 137(1):176-187(2009)
	4) Endo, M., et al. J. Neurosci. 29(20):6649-6662(2009)

### **ANTIBODIES FOR RESEARCH USE ONLY.**

For additional information, visit ProSci's [Terms & Conditions Page](#).