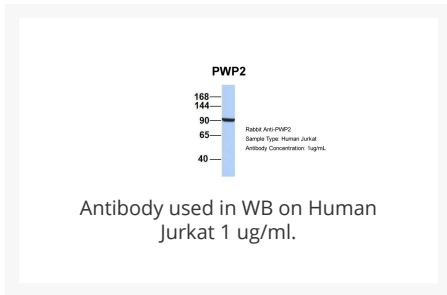
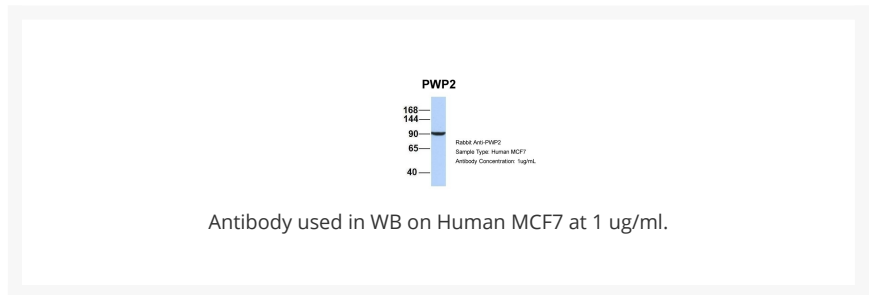
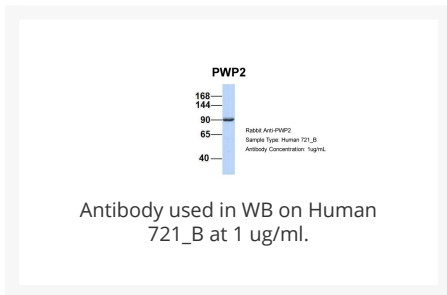
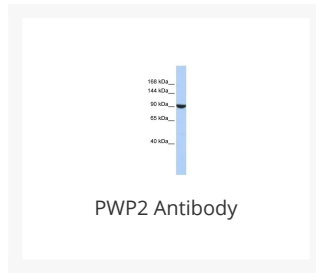




# PWP2 Antibody

Cat. No.: 26-079



## Ψ Specifications

<b>HOST SPECIES:</b>	Rabbit
<b>SPECIES REACTIVITY:</b>	Human, Mouse, Rat
<b>IMMUNOGEN:</b>	Antibody produced in rabbits immunized with a synthetic peptide corresponding a region of human PWP2.
<b>TESTED APPLICATIONS:</b>	ELISA, WB

<b>APPLICATIONS:</b>	PWP2 antibody can be used for detection of PWP2 by ELISA at 1:62500. PWP2 antibody can be used for detection of PWP2 by western blot at 1 µg/mL, and HRP conjugated secondary antibody should be diluted 1:50,000 - 100,000.
<b>POSITIVE CONTROL:</b>	1) Cat. No. 1211 - HepG2 Cell Lysate
<b>PREDICTED MOLECULAR WEIGHT:</b>	102 kDa

## Ψ Properties

<b>PURIFICATION:</b>	Antibody is purified by peptide affinity chromatography method.
<b>CLONALITY:</b>	Polyclonal
<b>CONJUGATE:</b>	Unconjugated
<b>PHYSICAL STATE:</b>	Liquid
<b>BUFFER:</b>	Purified antibody supplied in 1x PBS buffer with 0.09% (w/v) sodium azide and 2% sucrose.
<b>CONCENTRATION:</b>	batch dependent
<b>STORAGE CONDITIONS:</b>	For short periods of storage (days) store at 4 °C. For longer periods of storage, store PWP2 antibody at -20 °C. As with any antibody avoid repeat freeze-thaw cycles.

## Ψ Additional Info

<b>OFFICIAL SYMBOL:</b>	PWP2
<b>ALTERNATE NAMES:</b>	PWP2, EHOc-17, PWP2H, UTP1
<b>ACCESSION NO.:</b>	NP_005040
<b>PROTEIN GI NO.:</b>	48762926
<b>GENE ID:</b>	5822
<b>USER NOTE:</b>	Optimal dilutions for each application to be determined by the researcher.

## Ψ Background and References

<b>BACKGROUND:</b>	PWP2 belongs to the WD repeat PWP2 family. It contains 14 WD repeats. The exact function of PWP2 is not known.
<b>REFERENCES:</b>	1) Scherl, A., (2002) Mol. Biol. Cell 13 (11), 4100-4109.

### ANTIBODIES FOR RESEARCH USE ONLY.

For additional information, visit ProSci's [Terms & Conditions Page](#).