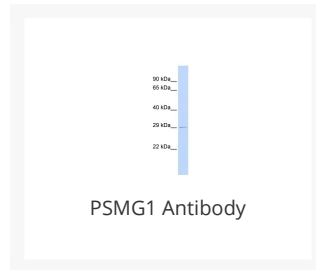




PSMG1 Antibody

Cat. No.: 26-077



Ψ Specifications

HOST SPECIES:	Rabbit
SPECIES REACTIVITY:	Human
IMMUNOGEN:	Antibody produced in rabbits immunized with a synthetic peptide corresponding a region of human PSMG1.
TESTED APPLICATIONS:	WB
APPLICATIONS:	PSMG1 antibody can be used for detection of PSMG1 by ELISA at 1:62500. PSMG1 antibody can be used for detection of PSMG1 by western blot at 1 µg/mL, and HRP conjugated secondary antibody should be diluted 1:50,000 - 100,000.
POSITIVE CONTROL:	1) Cat. No. XBL-10407 - Fetal Heart Tissue Lysate
PREDICTED MOLECULAR WEIGHT:	33 kDa

Ψ Properties

PURIFICATION:	Antibody is purified by peptide affinity chromatography method.
CLONALITY:	Polyclonal
CONJUGATE:	Unconjugated
PHYSICAL STATE:	Liquid

BUFFER:	Purified antibody supplied in 1x PBS buffer with 0.09% (w/v) sodium azide and 2% sucrose.
CONCENTRATION:	batch dependent
STORAGE CONDITIONS:	For short periods of storage (days) store at 4 °C. For longer periods of storage, store PSMG1 antibody at -20 °C. As with any antibody avoid repeat freeze-thaw cycles.

Additional Info

OFFICIAL SYMBOL:	PSMG1
ALTERNATE NAMES:	PSMG1, C21LRP, DSCR2, LRPC21, PAC1, PAC-1
ACCESSION NO.:	NP_003711
PROTEIN GI NO.:	4505023
GENE ID:	8624
USER NOTE:	Optimal dilutions for each application to be determined by the researcher.

Background and References

BACKGROUND:	PSMG1 is a chaperone protein which promotes assembly of the 20S proteasome as part of a heterodimer with PSMG2. The PSMG1-PSMG2 heterodimer binds to the PSMA5 and PSMA7 proteasome subunits, promotes assembly of the proteasome alpha subunits into the heteroheptameric alpha ring and prevents alpha ring dimerization.
REFERENCES:	1) Hirano, Y., (2006) Mol. Cell 24 (6), 977-984.

ANTIBODIES FOR RESEARCH USE ONLY.

For additional information, visit ProSci's [Terms & Conditions Page](#).