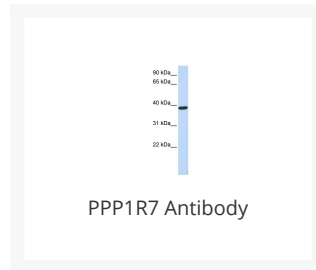




PPP1R7 Antibody

Cat. No.: 27-084



Ψ Specifications

HOST SPECIES:	Rabbit
SPECIES REACTIVITY:	Human, Mouse
IMMUNOGEN:	Antibody produced in rabbits immunized with a synthetic peptide corresponding a region of human PPP1R7.
TESTED APPLICATIONS:	ELISA, WB
APPLICATIONS:	PPP1R7 antibody can be used for detection of PPP1R7 by ELISA at 1:312500. PPP1R7 antibody can be used for detection of PPP1R7 by western blot at 1 µg/mL, and HRP conjugated secondary antibody should be diluted 1:50,000 - 100,000.
POSITIVE CONTROL:	1) Cat. No. XBL-10413 - Fetal Skeletal Muscle Tissue Lysate
PREDICTED MOLECULAR WEIGHT:	41 kDa

Ψ Properties

PURIFICATION:	Antibody is purified by peptide affinity chromatography method.
CLONALITY:	Polyclonal
CONJUGATE:	Unconjugated
PHYSICAL STATE:	Liquid

BUFFER:	Purified antibody supplied in 1x PBS buffer with 0.09% (w/v) sodium azide and 2% sucrose.
CONCENTRATION:	batch dependent
STORAGE CONDITIONS:	For short periods of storage (days) store at 4 °C. For longer periods of storage, store PPP1R7 antibody at -20 °C. As with any antibody avoid repeat freeze-thaw cycles.

Additional Info

OFFICIAL SYMBOL:	PPP1R7
ALTERNATE NAMES:	PPP1R7, SDS22
ACCESSION NO.:	NP_002703
PROTEIN GI NO.:	4506013
GENE ID:	5510
USER NOTE:	Optimal dilutions for each application to be determined by the researcher.

Background and References

BACKGROUND:	PPP1R7 is the regulatory subunit of protein phosphatase 1.
REFERENCES:	1) Lesage, B., (2007) Biochemistry 46 (31), 8909-8919.

ANTIBODIES FOR RESEARCH USE ONLY.

For additional information, visit ProSci's [Terms & Conditions Page](#).