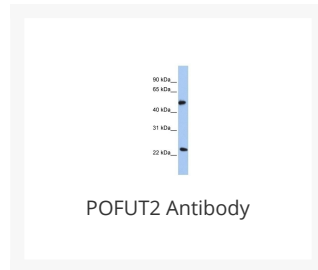




# POFUT2 Antibody

Cat. No.: 26-081



## Ψ Specifications

<b>HOST SPECIES:</b>	Rabbit
<b>SPECIES REACTIVITY:</b>	Human, Mouse, Rat
<b>IMMUNOGEN:</b>	Antibody produced in rabbits immunized with a synthetic peptide corresponding a region of human POFUT2.
<b>TESTED APPLICATIONS:</b>	ELISA, WB
<b>APPLICATIONS:</b>	POFUT2 antibody can be used for detection of POFUT2 by ELISA at 1:312500. POFUT2 antibody can be used for detection of POFUT2 by western blot at 1 µg/mL, and HRP conjugated secondary antibody should be diluted 1:50,000 - 100,000.
<b>POSITIVE CONTROL:</b>	1) Transfected 293T Cell Lysate
<b>PREDICTED MOLECULAR WEIGHT:</b>	50 kDa

## Ψ Properties

<b>PURIFICATION:</b>	Antibody is purified by peptide affinity chromatography method.
<b>CLONALITY:</b>	Polyclonal
<b>CONJUGATE:</b>	Unconjugated
<b>PHYSICAL STATE:</b>	Liquid

<b>BUFFER:</b>	Purified antibody supplied in 1x PBS buffer with 0.09% (w/v) sodium azide and 2% sucrose.
<b>CONCENTRATION:</b>	batch dependent
<b>STORAGE CONDITIONS:</b>	For short periods of storage (days) store at 4 °C. For longer periods of storage, store POFUT2 antibody at -20 °C. As with any antibody avoid repeat freeze-thaw cycles.

## Ψ Additional Info

<b>OFFICIAL SYMBOL:</b>	POFUT2
<b>ALTERNATE NAMES:</b>	POFUT2, C21orf80, FUT13
<b>ACCESSION NO.:</b>	NP_598368
<b>PROTEIN GI NO.:</b>	34147487
<b>GENE ID:</b>	23275
<b>USER NOTE:</b>	Optimal dilutions for each application to be determined by the researcher.

## Ψ Background and References

<b>BACKGROUND:</b>	POFUT2 catalyzes the reaction that attaches fucose through an O-glycosidic linkage to a conserved serine or threonine residue in thrombospondin type 1 repeats. Fucose is typically found as a terminal modification of branched chain glycoconjugates, but it also exists in direct O-linkage to serine or threonine residues within cystine knot motifs in epidermal growth factor (EGF; MIM 131530)-like repeats or thrombospondin (THBS; see MIM 188060) type-1 repeats. POFUT2 is an O-fucosyltransferase that use THBS type-1 repeats as substrates (Luo et al., 2006 [PubMed 16464857]).
<b>REFERENCES:</b>	1) Luo, Y., (2006) J. Biol. Chem. 281 (14), 9385-9392.

### ANTIBODIES FOR RESEARCH USE ONLY.

For additional information, visit ProSci's [Terms & Conditions Page](#).