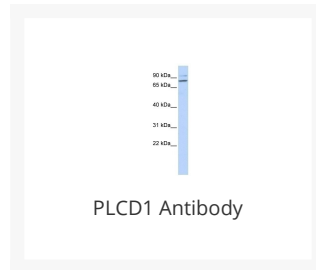




PLCD1 Antibody

Cat. No.: 27-096



Ψ Specifications

HOST SPECIES:	Rabbit
SPECIES REACTIVITY:	Human
IMMUNOGEN:	Antibody produced in rabbits immunized with a synthetic peptide corresponding a region of human PLCD1.
TESTED APPLICATIONS:	ELISA, WB
APPLICATIONS:	PLCD1 antibody can be used for detection of PLCD1 by ELISA at 1:1562500. PLCD1 antibody can be used for detection of PLCD1 by western blot at 1 µg/mL, and HRP conjugated secondary antibody should be diluted 1:50,000 - 100,000.
POSITIVE CONTROL:	1) Cat. No. XBL-10123 - Fetal Brain Tissue Lysate
PREDICTED MOLECULAR WEIGHT:	86 kDa

Ψ Properties

PURIFICATION:	Antibody is purified by peptide affinity chromatography method.
CLONALITY:	Polyclonal
CONJUGATE:	Unconjugated
PHYSICAL STATE:	Liquid

BUFFER:	Purified antibody supplied in 1x PBS buffer with 0.09% (w/v) sodium azide and 2% sucrose.
CONCENTRATION:	batch dependent
STORAGE CONDITIONS:	For short periods of storage (days) store at 4 °C. For longer periods of storage, store PLCD1 antibody at -20 °C. As with any antibody avoid repeat freeze-thaw cycles.

Additional Info

OFFICIAL SYMBOL:	PLCD1
ALTERNATE NAMES:	PLCD1, NDNC3, PLC-III
ACCESSION NO.:	NP_006216
PROTEIN GI NO.:	90265805
GENE ID:	5333
USER NOTE:	Optimal dilutions for each application to be determined by the researcher.

Background and References

BACKGROUND:	Phosphoinositide-specific phospholipase C (PLC) acts as a signal transducer that generates 2 second messengers, diacylglycerol and inositol 1,4,5-trisphosphate, by hydrolyzing inositol phospholipids. PLC comprises a diverse family of enzymes that differ in structure and tissue distribution.
REFERENCES:	1) Fu, L., (2007) Cancer Res. 67 (22), 10720-10726.

ANTIBODIES FOR RESEARCH USE ONLY.

For additional information, visit ProSci's [Terms & Conditions Page](#).