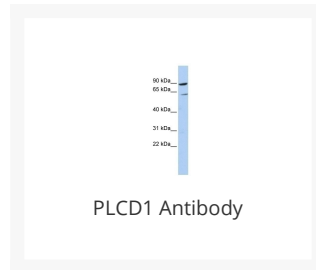




# PLCD1 Antibody

Cat. No.: 27-095



## Ψ Specifications

<b>HOST SPECIES:</b>	Rabbit
<b>SPECIES REACTIVITY:</b>	Human, Mouse, Rat
<b>IMMUNOGEN:</b>	Antibody produced in rabbits immunized with a synthetic peptide corresponding a region of human PLCD1.
<b>TESTED APPLICATIONS:</b>	ELISA, WB
<b>APPLICATIONS:</b>	PLCD1 antibody can be used for detection of PLCD1 by ELISA at 1:312500. PLCD1 antibody can be used for detection of PLCD1 by western blot at 1 µg/mL, and HRP conjugated secondary antibody should be diluted 1:50,000 - 100,000.
<b>POSITIVE CONTROL:</b>	1) Cat. No. 1211 - HepG2 Cell Lysate
<b>PREDICTED MOLECULAR WEIGHT:</b>	86 kDa

## Ψ Properties

<b>PURIFICATION:</b>	Antibody is purified by peptide affinity chromatography method.
<b>CLONALITY:</b>	Polyclonal
<b>CONJUGATE:</b>	Unconjugated
<b>PHYSICAL STATE:</b>	Liquid

<b>BUFFER:</b>	Purified antibody supplied in 1x PBS buffer with 0.09% (w/v) sodium azide and 2% sucrose.
<b>CONCENTRATION:</b>	batch dependent
<b>STORAGE CONDITIONS:</b>	For short periods of storage (days) store at 4 °C. For longer periods of storage, store PLCD1 antibody at -20 °C. As with any antibody avoid repeat freeze-thaw cycles.

## Additional Info

<b>OFFICIAL SYMBOL:</b>	PLCD1
<b>ALTERNATE NAMES:</b>	PLCD1, NDNC3, PLC-III
<b>ACCESSION NO.:</b>	NP_006216
<b>PROTEIN GI NO.:</b>	90265805
<b>GENE ID:</b>	5333
<b>USER NOTE:</b>	Optimal dilutions for each application to be determined by the researcher.

## Background and References

<b>BACKGROUND:</b>	Phosphoinositide-specific phospholipase C (PLC) acts as a signal transducer that generates 2 second messengers, diacylglycerol and inositol 1,4,5-trisphosphate, by hydrolyzing inositol phospholipids. PLC comprises a diverse family of enzymes that differ in structure and tissue distribution.
<b>REFERENCES:</b>	1) Fu, L., (2007) Cancer Res. 67 (22), 10720-10726.

### **ANTIBODIES FOR RESEARCH USE ONLY.**

For additional information, visit ProSci's [Terms & Conditions Page](#).