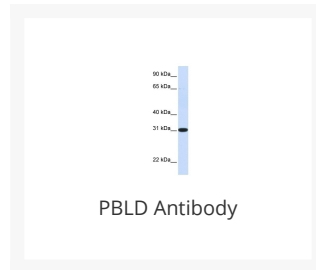




PBLD Antibody

Cat. No.: 27-082



Ψ Specifications

HOST SPECIES:	Rabbit
SPECIES REACTIVITY:	Human
IMMUNOGEN:	Antibody produced in rabbits immunized with a synthetic peptide corresponding a region of human PBLD.
TESTED APPLICATIONS:	ELISA, WB
APPLICATIONS:	PBLD antibody can be used for detection of PBLD by ELISA at 1:312500. PBLD antibody can be used for detection of PBLD by western blot at 1 µg/mL, and HRP conjugated secondary antibody should be diluted 1:50,000 - 100,000.
POSITIVE CONTROL:	1) Cat. No. XBL-10409 - Fetal Liver Tissue Lysate
PREDICTED MOLECULAR WEIGHT:	31 kDa

Ψ Properties

PURIFICATION:	Antibody is purified by peptide affinity chromatography method.
CLONALITY:	Polyclonal
CONJUGATE:	Unconjugated
PHYSICAL STATE:	Liquid

BUFFER:	Purified antibody supplied in 1x PBS buffer with 0.09% (w/v) sodium azide and 2% sucrose.
CONCENTRATION:	batch dependent
STORAGE CONDITIONS:	For short periods of storage (days) store at 4 °C. For longer periods of storage, store PBLD antibody at -20 °C. As with any antibody avoid repeat freeze-thaw cycles.

Additional Info

OFFICIAL SYMBOL:	PBLD
ALTERNATE NAMES:	PBLD, FLJ14767, FLJ35507, MAWBP, MAWDBP
ACCESSION NO.:	NP_001028255
PROTEIN GI NO.:	74316009
GENE ID:	64081
USER NOTE:	Optimal dilutions for each application to be determined by the researcher.

Background and References

BACKGROUND:	The function of the PBLD protein remains unknown.
REFERENCES:	1) van (2005) Nat. Genet. 37 (5), 514-519.

ANTIBODIES FOR RESEARCH USE ONLY.

For additional information, visit ProSci's [Terms & Conditions Page](#).