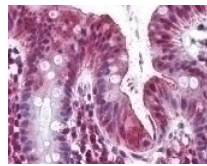




Olfactomedin 4 Antibody

Cat. No.: 49-306



Olfactomedin 4 Antibody

Ψ Specifications

HOST SPECIES:	Rabbit
SPECIES REACTIVITY:	Gibbon, Human
IMMUNOGEN:	Olfactomedin 4 antibody was raised against amino acids 400 - 450 of Olfactomedin 4 (Human).
TESTED APPLICATIONS:	IHC, WB
APPLICATIONS:	Olfactomedin 4 antibody can be used in ELISA, and immunohistochemistry starting at 10 μ g/mL.
SPECIFICITY:	A portion of amino acids 400-450 of human Olfactomedin 4.

Ψ Properties

PURIFICATION:	Immunoaffinity Chromatography
CLONALITY:	Polyclonal
CONJUGATE:	Unconjugated
PHYSICAL STATE:	Liquid
BUFFER:	PBS, 0.05% BSA, 0.05% sodium azide.
CONCENTRATION:	0.5 mg/ml

STORAGE CONDITIONS:	Short term: -20 °C; Long term: -20 °C.
----------------------------	----------------------------------------

Additional Info

OFFICIAL SYMBOL:	OLFM4
ALTERNATE NAMES:	OLFM4, Antiapoptotic protein GW112, HOLfD, HGC-1, GW112, OlfD, OLM4, UNQ362, Olfactomedin 4, Olfactomedin-4, BA209J19.1, GC1, HCG-1
ACCESSION NO.:	Q6UX06
PROTEIN GI NO.:	74749412
GENE ID:	10562
USER NOTE:	Optimal dilutions for each application to be determined by the researcher.

Background and References

BACKGROUND:	Olfactomedin 4 Antibody
--------------------	-------------------------

ANTIBODIES FOR RESEARCH USE ONLY.

For additional information, visit ProSci's [Terms & Conditions Page](#).