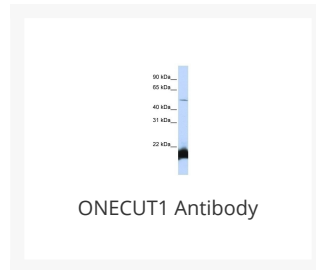




ONECUT1 Antibody

Cat. No.: 25-435



Ψ Specifications

HOST SPECIES:	Rabbit
SPECIES REACTIVITY:	Human
IMMUNOGEN:	Antibody produced in rabbits immunized with a synthetic peptide corresponding a region of human ONECUT1.
TESTED APPLICATIONS:	ELISA, WB
APPLICATIONS:	ONECUT1 antibody can be used for detection of ONECUT1 by ELISA at 1:312500. ONECUT1 antibody can be used for detection of ONECUT1 by western blot at 1 µg/mL, and HRP conjugated secondary antibody should be diluted 1:50,000 - 100,000.
POSITIVE CONTROL:	1) Cat. No. 1211 - HepG2 Cell Lysate
PREDICTED MOLECULAR WEIGHT:	51 kDa

Ψ Properties

PURIFICATION:	Antibody is purified by peptide affinity chromatography method.
CLONALITY:	Polyclonal
CONJUGATE:	Unconjugated
PHYSICAL STATE:	Liquid

BUFFER:	Purified antibody supplied in 1x PBS buffer with 0.09% (w/v) sodium azide and 2% sucrose.
CONCENTRATION:	batch dependent
STORAGE CONDITIONS:	For short periods of storage (days) store at 4 °C. For longer periods of storage, store ONECUT1 antibody at -20 °C. As with any antibody avoid repeat freeze-thaw cycles.

Additional Info

OFFICIAL SYMBOL:	ONECUT1
ALTERNATE NAMES:	ONECUT1, HNF-6, HNF6, HNF6A
ACCESSION NO.:	NP_004489
PROTEIN GI NO.:	24307887
GENE ID:	3175
USER NOTE:	Optimal dilutions for each application to be determined by the researcher.

Background and References

BACKGROUND:	ONECUT1 belongs to the CUT homeobox family. It contains 1 CUT DNA-binding domain and 1 homeobox DNA-binding domain. It is a transcriptional activator. ONECUT1 binds the consensus sequence 5'-DHWATTGAYTWWD-3' on a variety of gene promoters such as those of HNF3B and TTR. It is important for liver genes transcription.
REFERENCES:	1) Jiang, X., (2008) Oncol. Rep. 19 (1), 157-163.

ANTIBODIES FOR RESEARCH USE ONLY.

For additional information, visit ProSci's [Terms & Conditions Page](#).