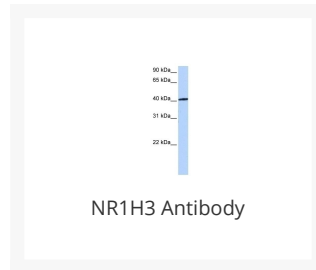




NR1H3 Antibody

Cat. No.: 25-443



Ψ Specifications

HOST SPECIES:	Rabbit
SPECIES REACTIVITY:	Human, Mouse, Rat
IMMUNOGEN:	Antibody produced in rabbits immunized with a synthetic peptide corresponding a region of human NR1H3.
TESTED APPLICATIONS:	ELISA, WB
APPLICATIONS:	NR1H3 antibody can be used for detection of NR1H3 by ELISA at 1:62500. NR1H3 antibody can be used for detection of NR1H3 by western blot at 1 µg/mL, and HRP conjugated secondary antibody should be diluted 1:50,000 - 100,000.
POSITIVE CONTROL:	1) Cat. No. 1219 - MCF7 Cell Lysate
PREDICTED MOLECULAR WEIGHT:	50 kDa

Ψ Properties

PURIFICATION:	Antibody is purified by peptide affinity chromatography method.
CLONALITY:	Polyclonal
CONJUGATE:	Unconjugated
PHYSICAL STATE:	Liquid

BUFFER:	Purified antibody supplied in 1x PBS buffer with 0.09% (w/v) sodium azide and 2% sucrose.
CONCENTRATION:	batch dependent
STORAGE CONDITIONS:	For short periods of storage (days) store at 4 °C. For longer periods of storage, store NR1H3 antibody at -20 °C. As with any antibody avoid repeat freeze-thaw cycles.

Ψ Additional Info

OFFICIAL SYMBOL:	NR1H3
ALTERNATE NAMES:	NR1H3, LXR-a, LXRA, RLD-1
ACCESSION NO.:	NP_005684
PROTEIN GI NO.:	194294517
GENE ID:	10062
USER NOTE:	Optimal dilutions for each application to be determined by the researcher.

Ψ Background and References

BACKGROUND:	Interaction of NR1H3 with RXR shifts RXR from its role as a silent DNA-binding partner to an active ligand-binding subunit in mediating retinoid responses through target genes defined by LXRES. NR1H3 are DR4-type response elements characterized by direct repeats of two similar hexanuclotide half-sites spaced by four nucleotides. NR1H3 Plays an important role in the regulation of cholesterol homeostasis.
REFERENCES:	1) Torra, I.P., (2008) Mol. Cell. Biol. 28 (8), 2626-2636.

ANTIBODIES FOR RESEARCH USE ONLY.

For additional information, visit ProSci's [Terms & Conditions Page](#).