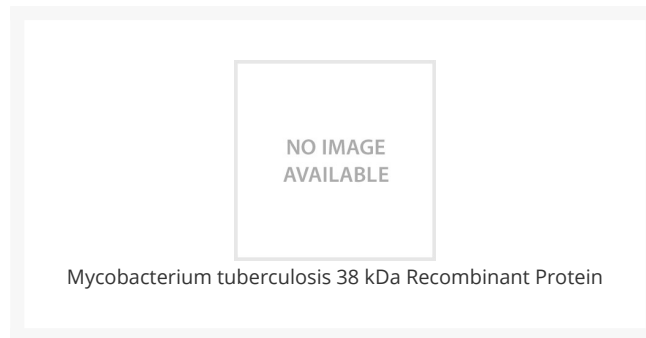




Mycobacterium tuberculosis 38 kDa Recombinant Protein

Cat. No.: 53-348



Ψ Specifications

SPECIES:	Bacteria
SOURCE SPECIES:	E. coli
SEQUENCE:	NA
FUSION TAG:	none
TESTED APPLICATIONS:	ELISA
APPLICATIONS:	This recombinant protein can be used ELISA. For research use only.
PREDICTED MOLECULAR WEIGHT:	38 kDa

Ψ Properties

PURITY:	~ 95% by SDS-PAGE
PHYSICAL STATE:	liquid
BUFFER:	25 mM Tris-HCl, 0.1% SDS, pH 8.3
CONCENTRATION:	batch dependent

STORAGE CONDITIONS:

Store in working aliquots at -20 °C. Avoid freeze/thaw cycles. When working with proteins care should be taken to keep recombinant protein at a cool and stable temperature.

ANTIBODIES FOR RESEARCH USE ONLY.

For additional information, visit ProSci's [Terms & Conditions Page](#).