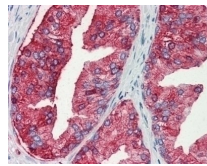




Mucin 13 Antibody

Cat. No.: 49-990



Mucin 13 Antibody

Ψ Specifications

HOST SPECIES:	Rabbit
SPECIES REACTIVITY:	Gibbon, Gorilla, Human
IMMUNOGEN:	Mucin 13 antibody was raised against synthetic peptide corresponding to an internal domain of human Mucin 13 (Human).
TESTED APPLICATIONS:	IHC
APPLICATIONS:	Mucin 13 antibody can be used in ELISA, Western Blot, and immunohistochemistry starting at 5 µg/mL.
SPECIFICITY:	BLAST analysis of the peptide immunogen showed no homology with other human proteins, except FAT1 (57%).

Ψ Properties

PURIFICATION:	Immunoaffinity Chromatography
CLONALITY:	Polyclonal
CONJUGATE:	Unconjugated
PHYSICAL STATE:	Liquid
BUFFER:	PBS, 0.1% sodium azide.
CONCENTRATION:	1 mg/ml

STORAGE CONDITIONS:	Mucin 13 antibody should be stored long term (months) at -80 °C and short term (days) at 4 °C. As with all antibodies avoid freeze/thaw cycles.
----------------------------	---

Additional Info

OFFICIAL SYMBOL:	MUC13
ALTERNATE NAMES:	MUC13, DRCC1, MUC-13, RECC, Mucin-13
ACCESSION NO.:	Q9H3R2
PROTEIN GI NO.:	296438300
GENE ID:	56667
USER NOTE:	Optimal dilutions for each application to be determined by the researcher.

Background and References

BACKGROUND:	Mucin 13 Antibody
--------------------	-------------------

ANTIBODIES FOR RESEARCH USE ONLY.

For additional information, visit ProSci's [Terms & Conditions Page](#).