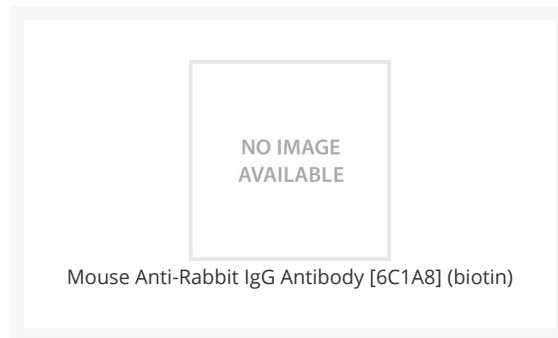




Mouse Anti-Rabbit IgG Antibody [6C1A8] (biotin)

Cat. No.: 1602



Ψ Specifications

HOST SPECIES:	Mouse
SPECIES REACTIVITY:	Rabbit
IMMUNOGEN:	Rabbit IgG
TARGET SPECIES:	Reacts with the heavy chain of rabbit IgG.
TESTED APPLICATIONS:	ELISA, IHC, WB
APPLICATIONS:	Immunoblotting: 1/1,000 - 1/20,000,, ELISA: 1/1,000 - 1/20,000, Immunohistochemistry: 1/100 - 1/1,000
SPECIFICITY:	No cross reactivity with immunoglobulins from other species.

Ψ Properties

PURIFICATION:	The purified antibody-Biotin conjugate is separated from non-conjugated biotin by dialysis.
ISOTYPE:	IgG2
CONJUGATE:	Biotin
PHYSICAL STATE:	Liquid

BUFFER:	PBS pH 7.2, 1% BSA, 0.02% Sodium Azide
CONCENTRATION:	1 mg/mL
STORAGE CONDITIONS:	Store at 2-8 °C. The product is stable for about 4-6 weeks at 4 °C as an undiluted liquid. For extended storage, aliquot and freeze the product at -70 °C or below. Avoid repeated freezing and thawing. Or alternatively, add an equal volume of glycerol for a final concentration of 50% and store at -20 °C.

Additional Info

USER NOTE:	Prepare working dilution fresh each time.
-------------------	-------------------------------------------

ANTIBODIES FOR RESEARCH USE ONLY.

For additional information, visit ProSci's [Terms & Conditions Page](#).