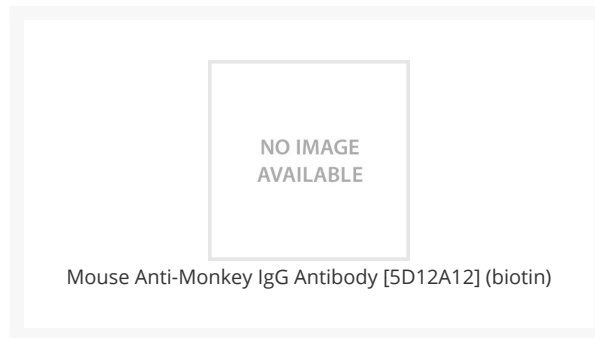




# Mouse Anti-Monkey IgG Antibody [5D12A12] (biotin)

Cat. No.: 1606



## Ψ Specifications

<b>HOST SPECIES:</b>	Mouse
<b>SPECIES REACTIVITY:</b>	Monkey
<b>IMMUNOGEN:</b>	Monkey IgG
<b>TARGET SPECIES:</b>	Reacts with the heavy chain of monkey IgG.
<b>TESTED APPLICATIONS:</b>	ELISA, IHC, WB
<b>APPLICATIONS:</b>	Immunoblotting: 1/1,000 - 1/20,000, ELISA: 1/1,000 - 1/20,000, Immunohistochemistry: 1/100 - 1/1,000
<b>SPECIFICITY:</b>	No cross reactivity with immunoglobulins from other species.

## Ψ Properties

<b>PURIFICATION:</b>	The purified antibody-Biotin conjugate is separated from non-conjugated biotin by dialysis.
<b>ISOTYPE:</b>	IgG1
<b>CONJUGATE:</b>	Biotin
<b>PHYSICAL STATE:</b>	Liquid

<b>BUFFER:</b>	PBS pH 7.2, 1% BSA, 0.02% Sodium Azide
<b>CONCENTRATION:</b>	1 mg/mL
<b>STORAGE CONDITIONS:</b>	Store at 2-8 °C. The product is stable for about 4-6 weeks at 4 °C as an undiluted liquid. For extended storage, aliquot and freeze the product at -70 °C or below. Avoid repeated freezing and thawing. Or alternatively, add an equal volume of glycerol for a final concentration of 50% and store at -20 °C.

## Additional Info

---

<b>USER NOTE:</b>	Prepare working dilution fresh each time.
-------------------	---

---

### **ANTIBODIES FOR RESEARCH USE ONLY.**

For additional information, visit ProSci's [Terms & Conditions Page](#).