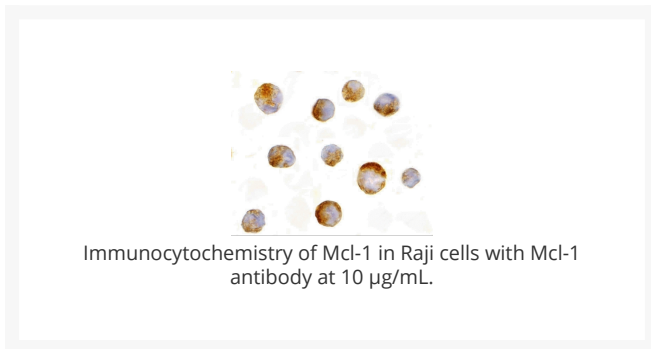
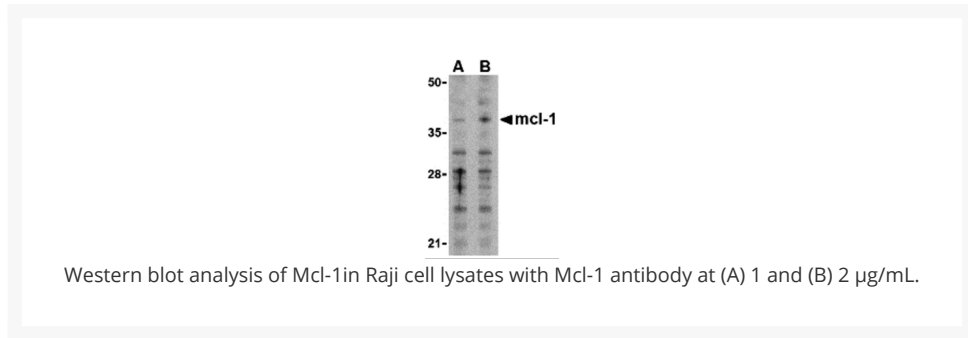




# Mcl-1 Antibody

Cat. No.: 3479



## $\Psi$ Specifications

<b>HOST SPECIES:</b>	Rabbit
<b>SPECIES REACTIVITY:</b>	Human
<b>IMMUNOGEN:</b>	Mcl-1 antibody was raised against a peptide corresponding to 16 amino acids near the amino-terminus of human Mcl-1.  The immunogen is located within amino acids 20 - 70 of Mcl-1.
<b>TESTED APPLICATIONS:</b>	ELISA, ICC, IF, WB

<b>APPLICATIONS:</b>	Mcl-1 antibody can be used for detection of isoforms Mcl-1L and Mcl-1S by Western blot at 1 to 2 µg/mL. Antibody can also be used for immunocytochemistry starting at 10 µg/mL. For immunofluorescence start at 20 µg/mL.  Antibody validated: Western Blot in human samples; Immunocytochemistry in human samples and Immunofluorescence in human samples. All other applications and species not yet tested.
<b>SPECIFICITY:</b>	Detects isoforms Mcl-1L and Mcl-1S
<b>POSITIVE CONTROL:</b>	1) Cat. No. 1207 - Raji Cell Lysate
	2) Cat. No. 17-007 - Raji Cell Slide

## Ψ Properties

<b>PURIFICATION:</b>	Mcl-1 Antibody is Ion exchange chromatography purified.
<b>CLONALITY:</b>	Polyclonal
<b>ISOTYPE:</b>	IgG
<b>CONJUGATE:</b>	Unconjugated
<b>PHYSICAL STATE:</b>	Liquid
<b>BUFFER:</b>	Mcl-1 Antibody is supplied in PBS containing 0.02% sodium azide.
<b>CONCENTRATION:</b>	1 mg/mL
<b>STORAGE CONDITIONS:</b>	Mcl-1 antibody can be stored at 4 °C for three months and -20 °C, stable for up to one year. As with all antibodies care should be taken to avoid repeated freeze thaw cycles. Antibodies should not be exposed to prolonged high temperatures.

## Ψ Additional Info

<b>OFFICIAL SYMBOL:</b>	MCL1
<b>ALTERNATE NAMES:</b>	Mcl-1 Antibody: TM, EAT, MCL1L, MCL1S, Mcl-1, BCL2L3, MCL1-ES, bcl2-L-3, mcl1/EAT, Induced myeloid leukemia cell differentiation protein Mcl-1, Bcl-2-like protein 3, Bcl2-L-3
<b>ACCESSION NO.:</b>	NP_068779
<b>PROTEIN GI NO.:</b>	11386165
<b>GENE ID:</b>	4170
<b>USER NOTE:</b>	Optimal dilutions for each application to be determined by the researcher.

## Ψ Background and References

<b>BACKGROUND:</b>	Mcl-1 Antibody: Myeloid cell leukemia-1 (Mcl-1) is a member of the Bcl-2 family of proteins that can act to promote cell survival. While the mechanism by which Mcl-1 inhibits apoptosis is not known, it is thought that it may heterodimerize and neutralize pro-apoptotic members of the Bcl-2 family such as Bim or Bak. Mcl-1 was originally identified in differentiating myeloid cells, but has since been shown to be expressed in multiple cell types. Mcl-1 is essential for embryogenesis and for the development and maintenance of B and T lymphocytes in animals. Mcl-1 exists as at least three distinct isoforms designated Mcl-1L, Mcl-1S and Mcl-1ES. In marked contrast to the larger isoform of Mcl-1, overexpression of Mcl-1S promotes cell death.
<b>REFERENCES:</b>	1) Edwards SW, Derouet M, Howse M, et al. Regulation of neutrophil apoptosis by Mcl-1. <i>Biochem Soc Trans.</i> 2004; 32:489-92.
	2) Cuconati A, Mukherjee C, Perez D, et al. DNA damage response and MCL-1 destruction initiate apoptosis in adenovirus-infected cells. <i>Genes and Dev.</i> 2003; 17:2922-32.
	3) Opferman JT, Letai A, Beard C, et al. Development and maintenance of B and T lymphocytes require antiapoptotic MCL-1. <i>Nature</i> 2003; 426:671-6.
	4) Kozopas KM, Yang T, Buchan HL, et al. MCL1, a gene expressed in programmed myeloid cell differentiation, has sequence similarity to BCL2. <i>Proc. Natl. Acad. Sci. USA</i> 1993; 90:3516-20.

**ANTIBODIES FOR RESEARCH USE ONLY.**

For additional information, visit ProSci's [Terms & Conditions Page](#).