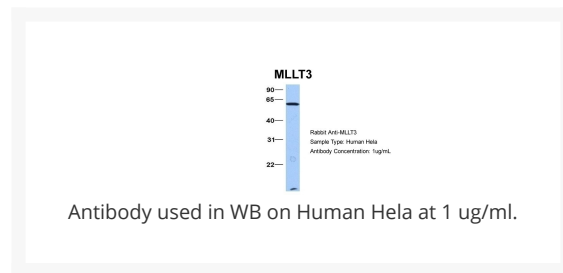
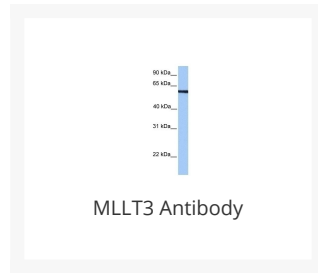




# MLLT3 Antibody

Cat. No.: 25-437



## Ψ Specifications

<b>HOST SPECIES:</b>	Rabbit
<b>SPECIES REACTIVITY:</b>	Human, Mouse
<b>IMMUNOGEN:</b>	Antibody produced in rabbits immunized with a synthetic peptide corresponding a region of human MLLT3.
<b>TESTED APPLICATIONS:</b>	ELISA, WB
<b>APPLICATIONS:</b>	MLLT3 antibody can be used for detection of MLLT3 by ELISA at 1:1562500. MLLT3 antibody can be used for detection of MLLT3 by western blot at 1 µg/mL, and HRP conjugated secondary antibody should be diluted 1:50,000 - 100,000.
<b>POSITIVE CONTROL:</b>	1) Cat. No. 1211 - HepG2 Cell Lysate
<b>PREDICTED MOLECULAR WEIGHT:</b>	63 kDa

<b>PURIFICATION:</b>	Antibody is purified by peptide affinity chromatography method.
<b>CLONALITY:</b>	Polyclonal
<b>CONJUGATE:</b>	Unconjugated
<b>PHYSICAL STATE:</b>	Liquid
<b>BUFFER:</b>	Purified antibody supplied in 1x PBS buffer with 0.09% (w/v) sodium azide and 2% sucrose.
<b>CONCENTRATION:</b>	batch dependent
<b>STORAGE CONDITIONS:</b>	For short periods of storage (days) store at 4 °C. For longer periods of storage, store MLLT3 antibody at -20 °C. As with any antibody avoid repeat freeze-thaw cycles.

## Ψ Additional Info

<b>OFFICIAL SYMBOL:</b>	MLLT3
<b>ALTERNATE NAMES:</b>	MLLT3, AF9, FLJ2035, YEATS3
<b>ACCESSION NO.:</b>	NP_004520
<b>PROTEIN GI NO.:</b>	156104889
<b>GENE ID:</b>	4300
<b>USER NOTE:</b>	Optimal dilutions for each application to be determined by the researcher.

## Ψ Background and References

<b>BACKGROUND:</b>	MLLT3 is a regulator of early erythroid and megakaryocytic cell fate in the human system. Expression of MLLT3 in human CD34+ cells induces acute myeloid, lymphoid, or mixed-lineage leukemia in immunodeficient mice. Translocation t (9;11) (p22;q23), a chromosomal aberration involving MLLT3 is associated with acute leukemias.
<b>REFERENCES:</b>	1) Wei, J., (2008) Cancer Cell 13 (6), 483-495.

### ANTIBODIES FOR RESEARCH USE ONLY.

For additional information, visit ProSci's [Terms & Conditions Page](#).