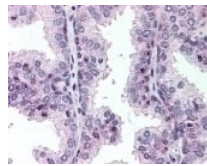




MLF1IP Antibody

Cat. No.: 49-359



MLF1IP Antibody

Ψ Specifications

HOST SPECIES:	Rabbit
SPECIES REACTIVITY:	Bovine, Chimpanzee, Dog, Human
IMMUNOGEN:	MLF1IP antibody was raised against amino acids surrounding Thr78 of MLF1IP (Human).
TESTED APPLICATIONS:	ELISA, IHC, IP, WB
APPLICATIONS:	MLF1 immunoprecipitation antibody can be used in ELISA, Western Blot, immunohistochemistry starting at 5 µg/mL, and immunoprecipitation
SPECIFICITY:	pThr78

Ψ Properties

PURIFICATION:	Immunoaffinity Chromatography
CLONALITY:	Polyclonal
CONJUGATE:	Unconjugated
PHYSICAL STATE:	Liquid
BUFFER:	0.02 M potassium phosphate, 0.15 M sodium chloride, pH 7.2, 0.01% sodium azide.
CONCENTRATION:	1 mg/ml

STORAGE CONDITIONS:	Store MLF1IP antibody at -20 °C prior to opening. Dilute only prior to immediate use. For extended storage, aliquot contents and freeze at -20 °C or below. As with all antibodies avoid freeze/thaw cycles.
----------------------------	--

Additional Info

OFFICIAL SYMBOL:	MLF1IP
ALTERNATE NAMES:	MLF1IP, CENP-U, CENP50, CENPU50, Centromere protein U, ICEN24, KLIP1, Polo-box-interacting protein 1, MLF1-interacting protein, CENP-50, CENPU, Centromere protein of 50 kDa, MLF1 interacting protein, PBIP1
ACCESSION NO.:	Q71F23
PROTEIN GI NO.:	74712714
GENE ID:	79682
USER NOTE:	Optimal dilutions for each application to be determined by the researcher.

Background and References

BACKGROUND:	MLF1IP Antibody
--------------------	-----------------

ANTIBODIES FOR RESEARCH USE ONLY.

For additional information, visit ProSci's [Terms & Conditions Page](#).