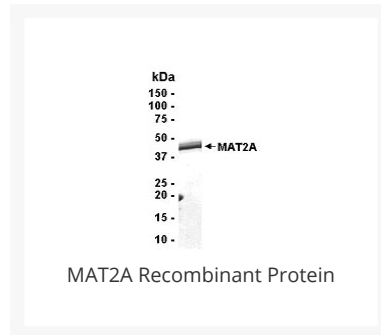




MAT2A Recombinant Protein

Cat. No.: XW-RP3143



Ψ Specifications

SPECIES:	Human
SOURCE SPECIES:	E. coli
SEQUENCE:	aa. 1-395
TESTED APPLICATIONS:	ELISA, MS, WB
APPLICATIONS:	This recombinant protein can be used for WB, ELISA, MS.
PREDICTED MOLECULAR WEIGHT:	46 kDa (Calculated)

Ψ Properties

PURITY:	95%
PHYSICAL STATE:	Liquid
BUFFER:	10 mM Tris, pH 8.0, 0.1% Triton X-100, 0.002% NaN ₃
STORAGE CONDITIONS:	Store in working aliquots at -70 °C. Avoid freeze/thaw cycles. When working with proteins care should be taken to keep recombinant protein at a cool and stable temperature.

OFFICIAL SYMBOL:	MAT2A
ALTERNATE NAMES:	MATA2, MATII, SAMS2, AMS2, MATA2, S-adenosylmethionine synthase isoform type-2, Methionine adenosyltransferase 2, AdoMet synthase 2
ACCESSION NO.:	NP_005902
PROTEIN GI NO.:	5174529
GENE ID:	4144

Background and References

BACKGROUND:	Methionine adenosyltransferase (EC 2.5.1.6) catalyzes the biosynthesis of S-adenosylmethionine (AdoMet) from methionine and ATP. AdoMet is the major methyl donor for many of the transmethylation reactions in the body. The MAT2A promoter is highly GC rich, especially in the first 300 bp. The promoter contains several potential SP1-, v-myb-, and GATA-binding sites, as well as potential binding sites for C/EBP, HSF2, c-myb, and STATx. It can efficiently drive expression from a reporter gene in both Jurkat and 293 cells.
--------------------	--

ANTIBODIES FOR RESEARCH USE ONLY.

For additional information, visit ProSci's [Terms & Conditions Page](#).