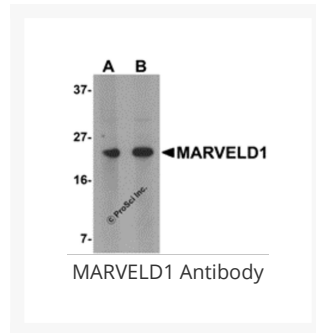




MARVELD1 Antibody

Cat. No.: 5499



Ψ Specifications

HOST SPECIES:	Rabbit
SPECIES REACTIVITY:	Human, Mouse, Rat
IMMUNOGEN:	MARVELD1 antibody was raised against a 16 amino acid synthetic peptide from near the amino terminus of human MARVELD1. The immunogen is located within the first 50 amino acids of MARVELD1.
TESTED APPLICATIONS:	ELISA, WB
APPLICATIONS:	MARVELD1 antibody can be used for detection of MARVELD1 by Western blot at 1 - 2 µg/mL. Antibody validated: Western Blot in mouse samples. All other applications and species not yet tested.
POSITIVE CONTROL:	1) Cat. No. 1401 - Mouse Heart Tissue Lysate

Ψ Properties

PURIFICATION:	MARVELD1 Antibody is affinity chromatography purified via peptide column.
CLONALITY:	Polyclonal
ISOTYPE:	IgG

CONJUGATE:	Unconjugated
PHYSICAL STATE:	Liquid
BUFFER:	MARVELD1 Antibody is supplied in PBS containing 0.02% sodium azide.
CONCENTRATION:	1 mg/mL
STORAGE CONDITIONS:	MARVELD1 antibody can be stored at 4 °C for three months and -20 °C, stable for up to one year. As with all antibodies care should be taken to avoid repeated freeze thaw cycles. Antibodies should not be exposed to prolonged high temperatures.

Additional Info

OFFICIAL SYMBOL:	MARVELD1
ALTERNATE NAMES:	MARVELD1 Antibody: MRVLDC1, MARVEL domain-containing protein 1
ACCESSION NO.:	EAW49903
PROTEIN GI NO.:	119570288
GENE ID:	83742
USER NOTE:	Optimal dilutions for each application to be determined by the researcher.

Background and References

BACKGROUND:	MARVELD1 Antibody: MARVELD1, (MARVEL domain-containing 1), is one of the MARVEL (MAL and related proteins for vesicle trafficking and membrane link) domain-containing proteins. It is a nuclear-localized protein that is widely expressed in normal human tissues. While it has been reported to be overexpressed in colon cancer, MARVELD1 protein levels are generally lower in several primary tumors including ovary, breast, kidney, bladder and liver. This lower level of MARVELD1 expression in tumors is thought to be due to a higher methylation status of the MARVELD1 promoter as treatment of MDA-MB-361 with 5-aza-2'-deoxycytidine restores MARVELD1 expression, suggesting that loss of MARVELD1 expression may contribute to tumorigenicity.
REFERENCES:	1) Wang S, Li Y, Han F, et al. On of MARVELD1, a novel nuclear protein that is down-regulated in multiple cancers and silenced by DNA methylation. <i>Cancer Lett.</i> 2009; 282:77-86.
	2) Alves PM, Levy N, Stevenson BJ, et al. Identification of tumor-associated antigens by large scale analysis of genes expressed in human colorectal cancer. <i>Cancer Immun.</i> 2008; 8:11.
	3) Hatada I, Fukasawa M, and Kimura M. Genome-wide profiling of promoter methylation in human. <i>Oncogene</i> 2006; 25:3059-64.

ANTIBODIES FOR RESEARCH USE ONLY.

For additional information, visit ProSci's [Terms & Conditions Page](#).