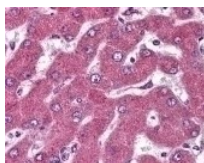




MARCH4 Antibody

Cat. No.: 48-935



Immunohistochemistry staining of MARCH4 in liver tissue using MARCH4 Antibody.

Ψ Specifications

HOST SPECIES:	Rabbit
SPECIES REACTIVITY:	Chicken, Chimpanzee, Dog, Horse, Human, Mouse, Opossum, Rat, Zebrafish
IMMUNOGEN:	A portion of amino acids 300-350 of human RNF174.
TESTED APPLICATIONS:	IHC, WB
APPLICATIONS:	MARCH4 antibody can be used in ELISA, Western Blot starting at 1:500 - 1:1000, and immunohistochemistry starting at 5 μ g/mL.
SPECIFICITY:	A portion of amino acids 300-350 of human RNF174.

Ψ Properties

PURIFICATION:	Immunoaffinity Chromatography
CLONALITY:	Polyclonal
CONJUGATE:	Unconjugated
PHYSICAL STATE:	Liquid
BUFFER:	PBS, 0.2% gelatin, 0.05% sodium azide.
CONCENTRATION:	0.5 mg/ml

STORAGE CONDITIONS:

MARCH4 antibody can be stored short term 4 °C. For long term storage aliquot and store at -20 °C. As with all antibodies avoid freeze/thaw cycles.

Additional Info

OFFICIAL SYMBOL:	41337
ALTERNATE NAMES:	MARCH4, RING finger protein 174, KIAA1399, MARCH-IV, RNF174
ACCESSION NO.:	Q9P2E8
PROTEIN GI NO.:	59798475
GENE ID:	57574
USER NOTE:	Optimal dilutions for each application to be determined by the researcher.

Background and References

BACKGROUND:	MARCH4 Antibody
--------------------	-----------------

ANTIBODIES FOR RESEARCH USE ONLY.

For additional information, visit ProSci's [Terms & Conditions Page](#).