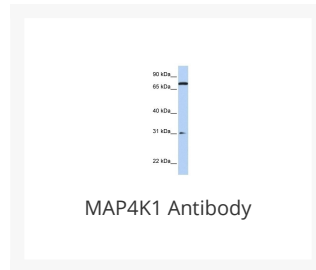




MAP4K1 Antibody

Cat. No.: 26-096



Ψ Specifications

HOST SPECIES:	Rabbit
SPECIES REACTIVITY:	Human, Rat
IMMUNOGEN:	Antibody produced in rabbits immunized with a synthetic peptide corresponding a region of human MAP4K1.
TESTED APPLICATIONS:	ELISA, WB
APPLICATIONS:	MAP4K1 antibody can be used for detection of MAP4K1 by ELISA at 1:312500. MAP4K1 antibody can be used for detection of MAP4K1 by western blot at 1 µg/mL, and HRP conjugated secondary antibody should be diluted 1:50,000 - 100,000.
POSITIVE CONTROL:	1) 721_B Cell Lysate
PREDICTED MOLECULAR WEIGHT:	90 kDa

Ψ Properties

PURIFICATION:	Antibody is purified by peptide affinity chromatography method.
CLONALITY:	Polyclonal
CONJUGATE:	Unconjugated
PHYSICAL STATE:	Liquid

BUFFER:	Purified antibody supplied in 1x PBS buffer with 0.09% (w/v) sodium azide and 2% sucrose.
CONCENTRATION:	batch dependent
STORAGE CONDITIONS:	For short periods of storage (days) store at 4 °C. For longer periods of storage, store MAP4K1 antibody at -20 °C. As with any antibody avoid repeat freeze-thaw cycles.

Additional Info

OFFICIAL SYMBOL:	MAP4K1
ALTERNATE NAMES:	MAP4K1, HPK1
ACCESSION NO.:	NP_001036065
PROTEIN GI NO.:	110611908
GENE ID:	11184
USER NOTE:	Optimal dilutions for each application to be determined by the researcher.

Background and References

BACKGROUND:	MAP4K1 belongs to the protein kinase superfamily, STE Ser/Thr protein kinase family, STE20 subfamily. MAP4K1 may play a role in the response to environmental stress. It appears to act upstream of the JUN N-terminal pathway. MAP4K1 may play a role in hematopoietic lineage decisions and growth regulation.
REFERENCES:	1) Brenner, D., (2007) Blood 110 (12), 3968-3977.

ANTIBODIES FOR RESEARCH USE ONLY.

For additional information, visit ProSci's [Terms & Conditions Page](#).