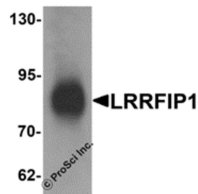


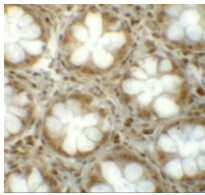


LRRFIP1 Antibody

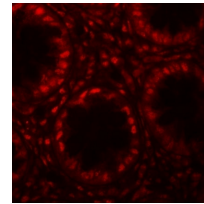
Cat. No.: 6219



Western blot analysis of LRRFIP1 in human colon tissue lysate with LRRFIP1 antibody at 1 µg/mL.



Immunohistochemistry of LRRFIP1 in human colon tissue with LRRFIP1 antibody at 5 µg/mL.



Immunofluorescence of LRRFIP1 in human colon tissue with LRRFIP1 antibody at 20 µg/mL.

Ψ Specifications

HOST SPECIES:	Rabbit
SPECIES REACTIVITY:	Human
IMMUNOGEN:	LRRFIP1 antibody was raised against a 19 amino acid synthetic peptide near the carboxy terminus of human LRRFIP1. The immunogen is located within the last 50 amino acids of LRRFIP1.
TESTED APPLICATIONS:	ELISA, IF, IHC-P, WB

APPLICATIONS:	LRRFIP1 antibody can be used for detection of LRRFIP1 by Western blot at 1 µg/mL. Antibody can also be used for immunohistochemistry starting at 5 µg/mL. For immunofluorescence start at 20 µg/mL. Antibody validated: Western Blot in human samples; Immunohistochemistry in human samples and Immunofluorescence in human samples. All other applications and species not yet tested.
SPECIFICITY:	LRRFIP1 antibody is predicted to not cross-react with other LRRFIP family members. Three isoforms of LRRFIP1 are known to exist; this antibody will only recognize the two longer isoforms.
POSITIVE CONTROL:	1) Cat. No. 1320 - Human Colon Tissue Lysate

Ψ Properties

PURIFICATION:	LRRFIP1 Antibody is affinity chromatography purified via peptide column.
CLONALITY:	Polyclonal
ISOTYPE:	IgG
CONJUGATE:	Unconjugated
PHYSICAL STATE:	Liquid
BUFFER:	LRRFIP1 Antibody is supplied in PBS containing 0.02% sodium azide.
CONCENTRATION:	1 mg/mL
STORAGE CONDITIONS:	LRRFIP1 antibody can be stored at 4 °C for three months and -20 °C, stable for up to one year. As with all antibodies care should be taken to avoid repeated freeze thaw cycles. Antibodies should not be exposed to prolonged high temperatures.

Ψ Additional Info

OFFICIAL SYMBOL:	LRRFIP1
ALTERNATE NAMES:	LRRFIP1 Antibody: GCF2, TRIP, FLAP1, GCF-2, FLAP-1, HUF1-1, FLIAP1, GCF2, Leucine-rich repeat flightless-interacting protein 1, GC-binding factor 2, LRR FLII-interacting protein 1
ACCESSION NO.:	NP_001131024
PROTEIN GI NO.:	212276096
GENE ID:	9208
USER NOTE:	Optimal dilutions for each application to be determined by the researcher.

Ψ Background and References

BACKGROUND:	LRRFIP1 Antibody: LRRFIP1, also known as GC-binding factor 2 (GCF2), is a 738 amino acid transcriptional repressor that mainly plays a cytoskeletal role. It is primarily localized in the cytoplasm and preferentially binds to GC-rich dsDNA, but will also bind directly to dsRNA as well. The RNA binding domain encompasses a lysine-rich motif. LRRFIP1 interacts with the mammalian Flightless I (Fli-I) and is a key component in the cytoskeletal regulation of platelet function. LRRFIP1 and the related protein LRRFIP2 may modulate canonical WNT signaling and mediate the IRF3-induced production of type I interferon via a beta-catenin-dependent pathway.
REFERENCES:	1) Rikiyama T, Curtis J, Oikawa M, et al. GCF2: expression and molecular analysis of repression. <i>Biochim. Biophys. Acta</i> 2003; 1629:15-25.
	2) Suriano AR, Sanford AN, Kim N, et al. GCF2/LRRFIP1 represses tumor necrosis factor α expression. <i>Mol. Cell. Biol.</i> 2005; 25:9073-81.
	3) Wilson SA, Brown EC, Kingsman AJ, et al. TRIP: a novel double-stranded RNA binding protein which interacts with the leucine-rich repeat of Flightless I. <i>Nucleic Acids Res.</i> 1998; 26:3460-7.
	4) Goodall AH, Burns P, Salles I, et al. Transcription profiling in human platelets reveals LRRFIP1 as a novel protein regulating platelet function. <i>Blood</i> 2010; 116:4646-56.

ANTIBODIES FOR RESEARCH USE ONLY.

For additional information, visit ProSci's [Terms & Conditions Page](#).