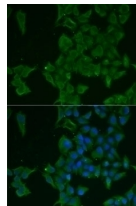
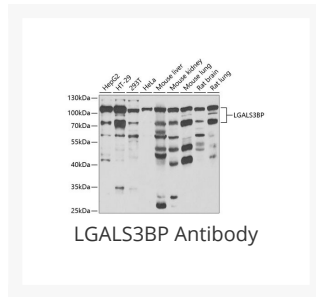




LGALS3BP Antibody

Cat. No.: 22-563



Immunofluorescence analysis of MCF7 cells using LGALS3BP antibody (22-563). Blue: DAPI for nuclear staining.

Ψ Specifications

HOST SPECIES:	Rabbit
SPECIES REACTIVITY:	Human, Mouse, Rat
IMMUNOGEN:	Recombinant fusion protein containing a sequence corresponding to amino acids 306-585 of human LGALS3BP (NP_005558.1).
TESTED APPLICATIONS:	IF, WB
APPLICATIONS:	WB: ,1:500 - 1:2000 IF: ,1:50 - 1:100
POSITIVE CONTROL:	1) HepG2
	2) HT-29
	3) 293T

	4) HeLa
	5) Mouse liver
	6) Mouse kidney
PREDICTED MOLECULAR WEIGHT:	Observed: 75kDa-110kDa

Ψ Properties

PURIFICATION:	Affinity purification
CLONALITY:	Polyclonal
ISOTYPE:	IgG
CONJUGATE:	Unconjugated
PHYSICAL STATE:	Liquid
BUFFER:	PBS with 0.02% sodium azide, 50% glycerol, pH7.3.
STORAGE CONDITIONS:	Store at -20 °C. Avoid freeze / thaw cycles.

Ψ Additional Info

OFFICIAL SYMBOL:	LGALS3BP
ALTERNATE NAMES:	LGALS3BP, 90K, MAC-2-BP, BTBD17B, TANGO10B
GENE ID:	3959
USER NOTE:	Optimal dilutions for each application to be determined by the researcher.

Ψ Background and References

BACKGROUND:	The galectins are a family of beta-galactoside-binding proteins implicated in modulating cell-cell and cell-matrix interactions. LGALS3BP has been found elevated in the serum of patients with cancer and in those infected by the human immunodeficiency virus (HIV). It appears to be implicated in immune response associated with natural killer (NK) and lymphokine-activated killer (LAK) cell cytotoxicity. Using fluorescence in situ hybridization the full length 90K cDNA has been localized to chromosome 17q25. The native protein binds specifically to a human macrophage-associated lectin known as Mac-2 and also binds galectin 1.
--------------------	---

ANTIBODIES FOR RESEARCH USE ONLY.

For additional information, visit ProSci's [Terms & Conditions Page](#).