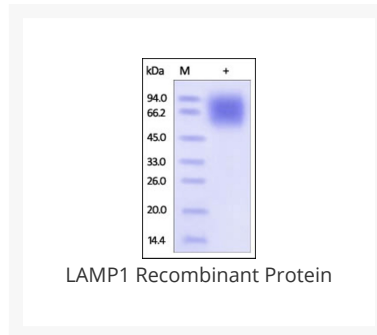




LAMP1 Recombinant Protein

Cat. No.: 96-503




Ψ Specifications

SPECIES:	Human
SOURCE SPECIES:	HEK293 cells
SEQUENCE:	Ala 29 - Met 382
FUSION TAG:	His Tag
TESTED APPLICATIONS:	WB
APPLICATIONS:	This recombinant protein can be used for WB. For research use only.
PREDICTED MOLECULAR WEIGHT:	39.2 kDa

Ψ Properties

PURITY:	>95% as determined by SDS-PAGE.
PHYSICAL STATE:	Lyophilized
BUFFER:	PBS, pH7.4
STORAGE CONDITIONS:	Lyophilized Protein should be stored at -20 °C or lower for long term storage. Upon reconstitution, working aliquots should be stored at -20 °C or -70 °C. Avoid repeated freeze-thaw cycles.

OFFICIAL SYMBOL:	LAMP1
ALTERNATE NAMES:	LAMP1, CD107a
ACCESSION NO.:	NP_005552
GENE ID:	3916

 Background and References

BACKGROUND:	Lysosomal-associated membrane protein 1 (LAMP1) is also known as CD107a (Cluster of Differentiation 107a). LAMP1 / CD107a belongs to the LAMP family. This glycoprotein provides selectins with carbohydrate ligands. It may also play a role in tumor cell metastasis. CD107a has also been shown to be a marker of degranulation on lymphocytes such as CD8+ and NK cells.
REFERENCES:	1) Chang MH., et al., J. Biol. Regul. Homeost. Agents 16 (2): 147-51.
	2) Carlsson S.R., et al., 1993, Arch. Biochem. Biophys. 304:65-73.

ANTIBODIES FOR RESEARCH USE ONLY.

For additional information, visit ProSci's [Terms & Conditions Page](#).