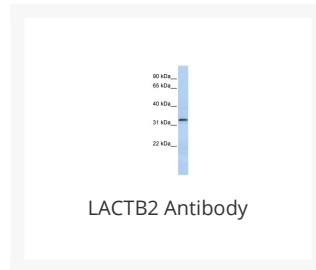




# LACTB2 Antibody

Cat. No.: 27-099



## Ψ Specifications

<b>HOST SPECIES:</b>	Rabbit
<b>SPECIES REACTIVITY:</b>	Human, Mouse, Rat
<b>IMMUNOGEN:</b>	Antibody produced in rabbits immunized with a synthetic peptide corresponding a region of human LACTB2.
<b>TESTED APPLICATIONS:</b>	ELISA, WB
<b>APPLICATIONS:</b>	LACTB2 antibody can be used for detection of LACTB2 by ELISA at 1:1562500. LACTB2 antibody can be used for detection of LACTB2 by western blot at 1 µg/mL, and HRP conjugated secondary antibody should be diluted 1:50,000 - 100,000.
<b>POSITIVE CONTROL:</b>	1) 721_B Cell Lysate
<b>PREDICTED MOLECULAR WEIGHT:</b>	33 kDa

## Ψ Properties

<b>PURIFICATION:</b>	Antibody is purified by peptide affinity chromatography method.
<b>CLONALITY:</b>	Polyclonal
<b>CONJUGATE:</b>	Unconjugated
<b>PHYSICAL STATE:</b>	Liquid

<b>BUFFER:</b>	Purified antibody supplied in 1x PBS buffer with 0.09% (w/v) sodium azide and 2% sucrose.
<b>CONCENTRATION:</b>	batch dependent
<b>STORAGE CONDITIONS:</b>	For short periods of storage (days) store at 4 °C. For longer periods of storage, store LACTB2 antibody at -20 °C. As with any antibody avoid repeat freeze-thaw cycles.

## Additional Info

---

<b>OFFICIAL SYMBOL:</b>	LACTB2
<b>ALTERNATE NAMES:</b>	LACTB2, CGI-83
<b>ACCESSION NO.:</b>	NP_057111
<b>PROTEIN GI NO.:</b>	7705793
<b>GENE ID:</b>	51110
<b>USER NOTE:</b>	Optimal dilutions for each application to be determined by the researcher.

## Background and References

---

<b>BACKGROUND:</b>	The specific function of LACTB2 is not yet known.
<b>REFERENCES:</b>	1) Suzuki, Y., Gene 200 (1-2), 149-156 (1997).

### **ANTIBODIES FOR RESEARCH USE ONLY.**

For additional information, visit ProSci's [Terms & Conditions Page](#).