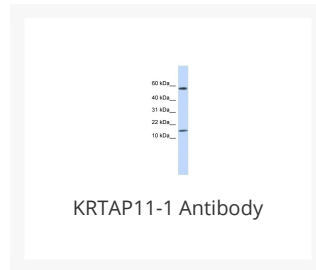




KRTAP11-1 Antibody

Cat. No.: 26-090



Ψ Specifications

HOST SPECIES:	Rabbit
SPECIES REACTIVITY:	Human
IMMUNOGEN:	Antibody produced in rabbits immunized with a synthetic peptide corresponding a region of human KRTAP11-1.
TESTED APPLICATIONS:	ELISA, WB
APPLICATIONS:	KRTAP11-1 antibody can be used for detection of KRTAP11-1 by ELISA at 1:62500. KRTAP11-1 antibody can be used for detection of KRTAP11-1 by western blot at 1 µg/mL, and HRP conjugated secondary antibody should be diluted 1:50,000 - 100,000.
POSITIVE CONTROL:	1) Cat. No. 1309 - Human Placenta Lysate
PREDICTED MOLECULAR WEIGHT:	17 kDa

Ψ Properties

PURIFICATION:	Antibody is purified by peptide affinity chromatography method.
CLONALITY:	Polyclonal
CONJUGATE:	Unconjugated
PHYSICAL STATE:	Liquid

BUFFER:	Purified antibody supplied in 1x PBS buffer with 0.09% (w/v) sodium azide and 2% sucrose.
CONCENTRATION:	batch dependent
STORAGE CONDITIONS:	For short periods of storage (days) store at 4 °C. For longer periods of storage, store KRTAP11-1 antibody at -20 °C. As with any antibody avoid repeat freeze-thaw cycles.

Additional Info

OFFICIAL SYMBOL:	KRTAP11-1
ALTERNATE NAMES:	KRTAP11-1, KAP11.1, HACL1, HACL-1
ACCESSION NO.:	NP_787054
PROTEIN GI NO.:	28466985
GENE ID:	337880
USER NOTE:	Optimal dilutions for each application to be determined by the researcher.

Background and References

BACKGROUND:	KRTAP11-1 belongs to the PMG family. In the hair cortex, hair keratin intermediate filaments are embedded in an interfilamentous matrix, consisting of hair keratin-associated proteins (KRTAP), which are essential for the formation of a rigid and resistant hair shaft through their extensive disulfide bond cross-linking with abundant cysteine residues of hair keratins. The matrix proteins include the high-sulfur and high-glycine-tyrosine keratins.
REFERENCES:	1) Pruetz, N.D., (2004) J. Biol. Chem. 279 (49), 51524-51533.

ANTIBODIES FOR RESEARCH USE ONLY.

For additional information, visit ProSci's [Terms & Conditions Page](#).