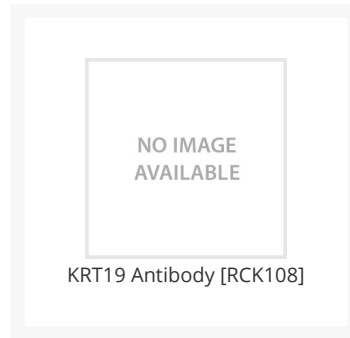




KRT19 Antibody [RCK108]

Cat. No.: 70-051



Ψ Specifications

HOST SPECIES:	Mouse
SPECIES REACTIVITY:	Human
IMMUNOGEN:	Cytoskeletal preparation of human bladder carcinoma cell line T24
TESTED APPLICATIONS:	Flow, ICC, IHC, WB
APPLICATIONS:	KRT19 Monoclonal Antibody can be used for flow cytometry starting at 1:100 - 1:200, immunohistochemistry (tested on frozen tissues starting at 1:100 - 1:200, immunohistochemistry (tested on parafin embedded tissues) starting at 10 µg/mL and Western Blot starting at 1:100 - 1:1000.
SPECIFICITY:	Reacts exclusively with cytokeratin 19 which is present in glandular-type epithelia and most carcinomas. Does not react with hepatocytes and hepatocellular carcinoma.

Ψ Properties

PURIFICATION:	Purified
CLONALITY:	Monoclonal
ISOTYPE:	IgG1
CONJUGATE:	Unconjugated

PHYSICAL STATE:	Liquid
BUFFER:	PBS containing 0.09% sodium azide
CONCENTRATION:	1 mg/ml
STORAGE CONDITIONS:	KRT19 Monoclonal antibody may be stored short term at 4 °C, long term aliquot and store at -20 °C, avoid freeze thaw cycles. Store undiluted.

Additional Info

OFFICIAL SYMBOL:	KRT19
ALTERNATE NAMES:	KRT19, CK19, Cytokeratin 19, Cytokeratin-19, Keratin 19, Keratin-19, CK-19, K19, K1CS, Keratin, type I, 40-kd
ACCESSION NO.:	P08727
PROTEIN GI NO.:	311033484
GENE ID:	3880
USER NOTE:	Optimal dilutions for each application to be determined by the researcher.

Background and References

BACKGROUND:	KRT19 Antibody [RCK108]
--------------------	-------------------------

ANTIBODIES FOR RESEARCH USE ONLY.

For additional information, visit ProSci's [Terms & Conditions Page](#).