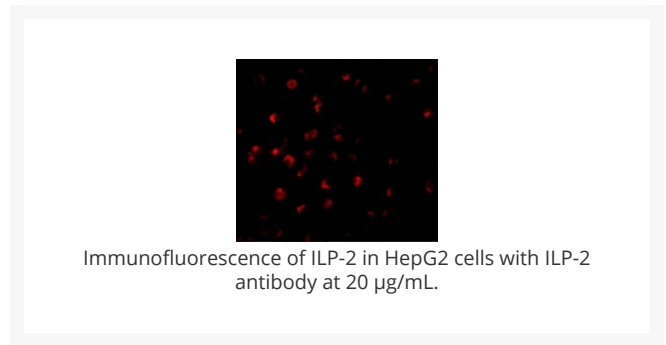
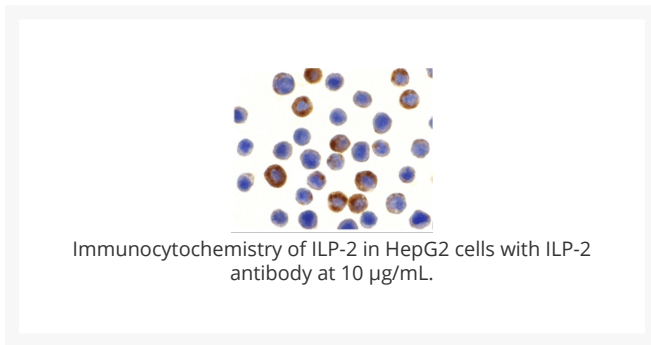
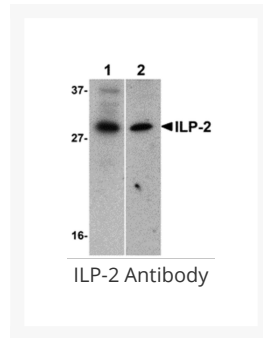




ILP-2 Antibody

Cat. No.: 3017



Ψ Specifications

HOST SPECIES:	Rabbit
SPECIES REACTIVITY:	Human, Mouse, Rat
IMMUNOGEN:	ILP-2 antibody was raised with against a synthetic peptide corresponding to amino acids near the amino terminus of human ILP-2. The immunogen is located within the first 50 amino acids of ILP-2.
TESTED APPLICATIONS:	ELISA, ICC, IF, WB

APPLICATIONS:	ILP-2 antibody can be used for detection of ILP-2 by Western blot at 1 µg/mL. A band at approximately 33 kDa can be detected. Antibody can also be used for immunocytochemistry starting at 10 µg/mL. For immunofluorescence start at 20 µg/mL. Antibody validated: Western Blot in human samples; Immunocytochemistry in human samples and Immunofluorescence in human samples. All other applications and species not yet tested.
POSITIVE CONTROL:	1) Cat. No. 1211 - HepG2 Cell Lysate 2) Cat. No. 17-011 - Hep G2 Cell Slide
PREDICTED MOLECULAR WEIGHT:	33 kDa

Ψ Properties

PURIFICATION:	ILP-2 Antibody is affinity chromatography purified via peptide column.
CLONALITY:	Polyclonal
ISOTYPE:	IgG
CONJUGATE:	Unconjugated
PHYSICAL STATE:	Liquid
BUFFER:	ILP-2 Antibody is supplied in PBS containing 0.02% sodium azide.
CONCENTRATION:	1 mg/mL
STORAGE CONDITIONS:	ILP-2 antibody can be stored at 4 °C for three months and -20 °C, stable for up to one year. As with all antibodies care should be taken to avoid repeated freeze thaw cycles. Antibodies should not be exposed to prolonged high temperatures.

Ψ Additional Info

OFFICIAL SYMBOL:	BIRC8
ALTERNATE NAMES:	ILP-2 Antibody: ILP2, ILP-2, hILP2, ILP2, Baculoviral IAP repeat-containing protein 8, Inhibitor of apoptosis-like protein 2, IAP-like protein 2
ACCESSION NO.:	NP_203127
PROTEIN GI NO.:	44680139
GENE ID:	112401
USER NOTE:	Optimal dilutions for each application to be determined by the researcher.

Ψ Background and References

BACKGROUND:	<p>ILP-2 Antibody: Apoptosis, or programmed cell death, is related to many diseases, such as cancer. Apoptosis is triggered by a variety of stimuli including members in the TNF family and prevented by the inhibitor of apoptosis (IAP) proteins. IAP proteins form a conserved gene family including IAP, XIAP/ILP-1/MIHA, and Livin/KIAP that bind to and inhibits specific proteases. A novel member in the IAP protein family was recently identified and designated ILP-2 for IAP-like protein-2. ILP-2 has high homology to ILP-1, but is encoded by a distinct gene that is solely expressed in testis of tested normal human tissues. ILP-2, unlike ILP-1, has no inhibitory effect on Fas and TNF induced apoptosis, but potently inhibits apoptosis induced by overexpression of Bax or by coexpression of caspase-9 with Apaf-1. ILP-2 interacts with the processed caspase-9. These results suggest that ILP-2 is a novel IAP family member with restricted specificity for caspase-9.</p>
REFERENCES:	<p>1) Richter BW, Mir SS, Eiben LJ, Lewis J, Reffey SB, Frattini A, Tian L, Frank S, Youle RJ, Nelson DL, Notarangelo LD, Vezzoni P, Fearnhead HO, Duckett CS. Molecular cloning of ILP-2, a novel member of the inhibitor of apoptosis protein family. Mol Cell Biol. 2001;21(13):4292-301.</p>

ANTIBODIES FOR RESEARCH USE ONLY.

For additional information, visit ProSci's [Terms & Conditions Page](#).