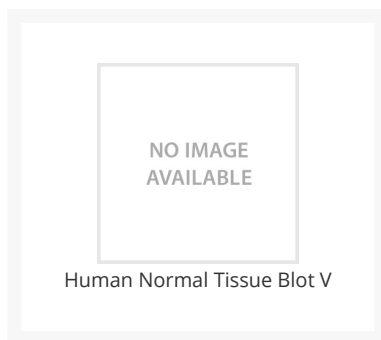




# Human Normal Tissue Blot V

Cat. No.: 1525



## Ψ Specifications

<b>SPECIES:</b>	Human
<b>TESTED APPLICATIONS:</b>	WB
<b>APPLICATIONS:</b>	For Western Blot, the blot can be blocked with 1% BSA or 5% nonfat dry milk for 1 hour. Incubation takes 30 minutes to two hours with primary antibody, and 30 minutes to one hour with secondary antibody at room temperature.

**STORAGE CONDITIONS:** Store at 4°C. The blot can be reused after stripping.

## Ψ Background and References

<b>BACKGROUND:</b>	The human tissue blot is designed for proteomics research in screening for antibody and protein expression. It carries 9 different human normal tissue lysates with 15 µg of total cellular protein in each lane. Proteins were separated in 4-20% SDS-PAGE gel and transferred onto nitrocellulose membrane. The human normal tissues included in the blot are appendix, kidney, liver, lymph node, peripheral blood leukocyte, spleen, thymus, tonsil, and thyroid.
--------------------	---

### ANTIBODIES FOR RESEARCH USE ONLY.

For additional information, visit ProSci's [Terms & Conditions Page](#).