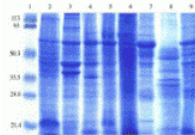




Human Normal Tissue Blot I

Cat. No.: 1521



Coomassie blue staining of human normal tissue lysates in 12% SDS-PAGE. Lanes: 1, protein markers; 2, brain; 3, colon; 4, heart; 5, kidney; 6, liver; 7, lung; 8, pancreas; and 9, spleen.

Ψ Specifications

SPECIES:	Human
TESTED APPLICATIONS:	WB
APPLICATIONS:	For Western Blot, the blot can be blocked with 1% BSA or 5% nonfat dry milk for 1 hour. Incubation takes 30 minutes to two hours with primary antibody, and 30 minutes to one hour with secondary antibody at room temperature.

STORAGE CONDITIONS: Store at 4°C. The blot can be reused after stripping.

Ψ Background and References

BACKGROUND:	The human tissue blot is designed for proteomics research in screening for antibody and protein expression. It carries 8 different human normal tissue lysates with 15 µg of total cellular protein in each lane. Proteins were separated in 4-20% SDS-PAGE gel and transferred onto nitrocellulose membrane. The human normal tissues included in the blot are brain, colon, heart, kidney, liver, lung, pancreas, and spleen.
--------------------	---

ANTIBODIES FOR RESEARCH USE ONLY.

For additional information, visit ProSci's [Terms & Conditions Page](#).