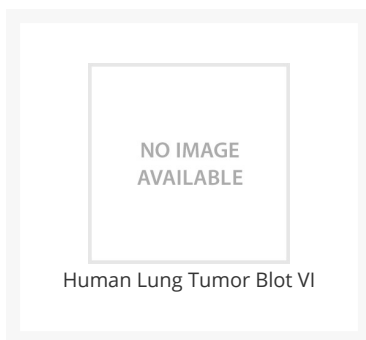




Human Lung Tumor Blot VI

Cat. No.: 1546



Ψ Specifications

SPECIES:	Human
TESTED APPLICATIONS:	WB
APPLICATIONS:	For Western Blot, the blot can be blocked with 1% BSA or 5% nonfat dry milk for 1 hour. Incubation takes 30 minutes to two hours with primary antibody, and 30 minutes to one hour with secondary antibody at room temperature.

STORAGE CONDITIONS: Store at 4°C. The blot can be reused after stripping.

Ψ Background and References

BACKGROUND:	The human tissue blot is designed for proteomics research in screening for antibody and protein expression. It carries 1 normal human lung tissue, the cell line A549 (human lung carcinoma), and 7 different human lung tumor tissue lysates with 15 µg of total cellular protein in each lane. Proteins in a wide range of molecular mass are separated in a 4-20% gradient SDS-PAGE gel and transferred onto nitrocellulose membranes. The lung tumor tissues included in the blot are 1 small cell carcinoma, 1 non-small cell carcinoma, 1 differentiated adenocarcinoma, 1 squamous cell carcinoma, 1 pleomorphic carcinoma and 2 non-diagnosed carcinomas (from different donors).
--------------------	---

ANTIBODIES FOR RESEARCH USE ONLY.

For additional information, visit ProSci's [Terms & Conditions Page](#).