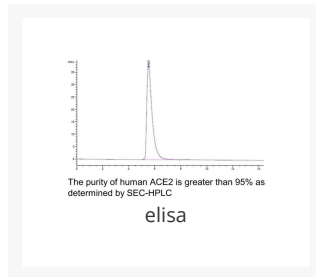




Human ACE2 Recombinant Protein

Cat. No.: 10-200



Ψ Specifications

SPECIES:	Human
SOURCE SPECIES:	HEK293 cells
SEQUENCE:	Gln18- Ser740
FUSION TAG:	His-Avi Tag
TESTED APPLICATIONS:	ELISA, WB
APPLICATIONS:	SDS-PAGE
PREDICTED MOLECULAR WEIGHT:	Predicted: 86.5kD Observed: 95-110kD due to glycosylation

Ψ Properties

PURITY:	>95% as determined by Bis-Tris PAGE; >95% as determined by HPLC
PHYSICAL STATE:	Lyophilized
BUFFER:	20mM PB (pH 7.4). 5 % trehalose is added as protectant before lyophilization.
STORAGE CONDITIONS:	Store in working aliquots at -20 °C. Avoid freeze/thaw cycles.

Additional Info

ALTERNATE NAMES:	Angiotensin-Converting Enzyme 2, ACE-Related Carboxypeptidase, Angiotensin-Converting Enzyme Homolog, ACEH, Metalloprotease MPROT15, ACE2
ACCESSION NO.:	Q9BYF1

Background and References

BACKGROUND:	ACE2 (Angiotensin I Converting Enzyme 2) is a Protein Coding gene. Diseases associated with ACE2 include Severe Acute Respiratory Syndrome and Neurogenic Hypertension. The protein encoded by this gene belongs to the angiotensin-converting enzyme family of dipeptidyl carboxydipeptidases and has considerable homology to human angiotensin 1 converting enzyme. This secreted protein catalyzes the cleavage of angiotensin I into angiotensin 1-9, and angiotensin II into the vasodilator angiotensin 1-7.
--------------------	---

ANTIBODIES FOR RESEARCH USE ONLY.

For additional information, visit ProSci's [Terms & Conditions Page](#).