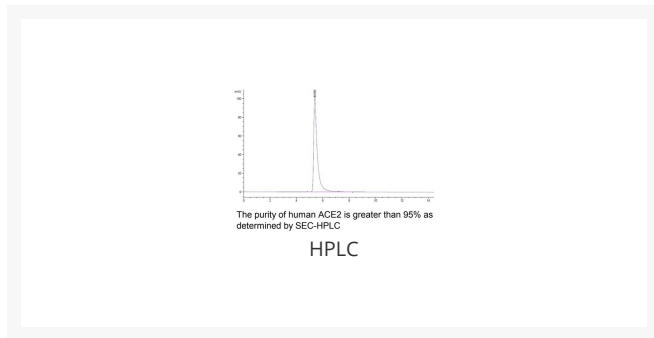
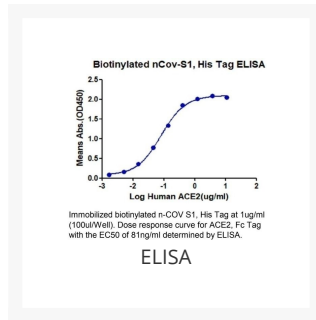




# Human ACE2 Recombinant Protein

Cat. No.: 10-203



## Ψ Specifications

<b>SPECIES:</b>	Human
<b>SOURCE SPECIES:</b>	HEK293 cells
<b>SEQUENCE:</b>	Gln18- Ser740
<b>FUSION TAG:</b>	Fc-Avi Tag
<b>TESTED APPLICATIONS:</b>	ELISA, WB
<b>APPLICATIONS:</b>	SDS-PAGE
<b>PREDICTED MOLECULAR WEIGHT:</b>	Predicted: 111.2kD Observed: 115-125kD due to glycosylation

## Ψ Properties

---

<b>PURITY:</b>	> 95% as determined by Bis-Tris PAGE; > 95% as determined by HPLC
<b>PHYSICAL STATE:</b>	Lyophilized
<b>BUFFER:</b>	20mM PB (pH 7.4). 5 % trehalose is added as protectant before lyophilization.
<b>STORAGE CONDITIONS:</b>	Store in working aliquots at -20 °C. Avoid freeze/thaw cycles.

## Ψ Additional Info

---

<b>ALTERNATE NAMES:</b>	Angiotensin-Converting Enzyme 2, ACE-Related Carboxypeptidase, Angiotensin-Converting Enzyme Homolog, ACEH, Metalloprotease MPROT15, ACE2
<b>ACCESSION NO.:</b>	Q9BYF1

## Ψ Background and References

---

<b>BACKGROUND:</b>	ACE2 (Angiotensin I Converting Enzyme 2) is a Protein Coding gene. Diseases associated with ACE2 include Severe Acute Respiratory Syndrome and Neurogenic Hypertension. The protein encoded by this gene belongs to the angiotensin-converting enzyme family of dipeptidyl carboxydipeptidases and has considerable homology to human angiotensin 1 converting enzyme. This secreted protein catalyzes the cleavage of angiotensin I into angiotensin 1-9, and angiotensin II into the vasodilator angiotensin 1-7.
--------------------	---

### **ANTIBODIES FOR RESEARCH USE ONLY.**

For additional information, visit ProSci's [Terms & Conditions Page](#).