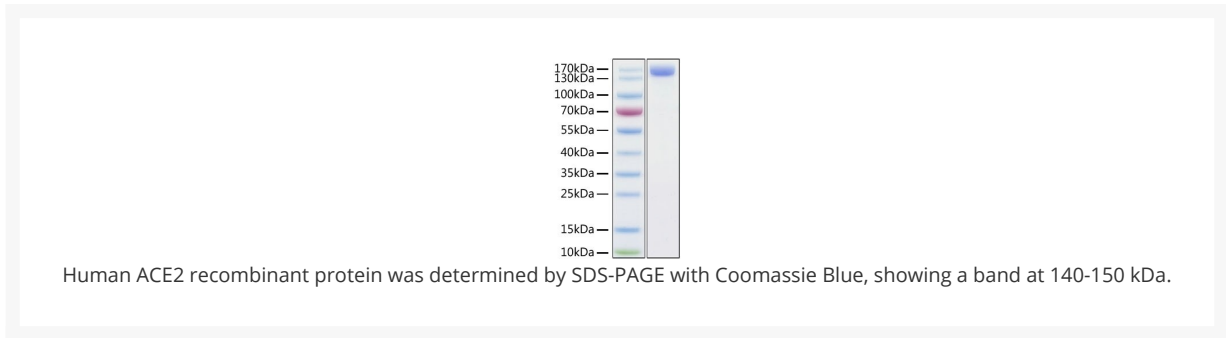




Human ACE2 Recombinant Protein

Cat. No.: 10-120



Ψ Specifications

| | |
|------------------------------------|--|
| SPECIES: | Human |
| SOURCE SPECIES: | Human Cells |
| SEQUENCE: | Gln18-Ser740 |
| FUSION TAG: | Fc tag at the C-terminus |
| TESTED APPLICATIONS: | WB |
| APPLICATIONS: | This recombinant protein can be used for SDS-PAGE. |
| PREDICTED MOLECULAR WEIGHT: | 140-150 kD |

Ψ Properties

| | |
|----------------------------|---|
| PURITY: | > 95% by SDS-PAGE. |
| PHYSICAL STATE: | Lyophilized |
| BUFFER: | PBS, pH 7.4 |
| STORAGE CONDITIONS: | Store the lyophilized protein at -20 °C to -80 °C for long term. After reconstitution, the protein solution is stable at -20 °C for 3 months, at 2-8 °C for up to 1 week. |

| | |
|-------------------------|-------------------|
| ALTERNATE NAMES: | ACE-2, ACEH, ACE2 |
| ACCESSION NO.: | YP_009724390.1 |
| PROTEIN GI NO.: | 59272 |

ANTIBODIES FOR RESEARCH USE ONLY.

For additional information, visit ProSci's [Terms & Conditions Page](#).