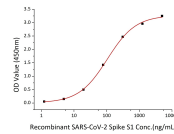


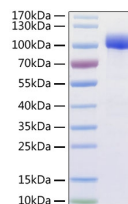


Human ACE2 Recombinant Protein

Cat. No.: 10-114



Immobilized human ACE2 recombinant protein at 2µg/mL (100 µL/well) can bind recombinant SARS-CoV-2 (COVID-19) spike S1 with a linear range of 1.5-104.5ng/mL.



Human ACE2 recombinant protein was determined by SDS-PAGE with Coomassie Blue, showing a band at 95-110 kD.

Ψ Specifications

SPECIES:	Human
SOURCE SPECIES:	Human Cells
SEQUENCE:	Gln18- Ser740
FUSION TAG:	His, Avi tag at the C-terminus
TESTED APPLICATIONS:	ELISA, WB
APPLICATIONS:	This recombinant protein can be used for SDS-PAGE.
PREDICTED MOLECULAR WEIGHT:	95-110 kD

PURITY:	> 95% by SDS-PAGE.
PHYSICAL STATE:	Lyophilized
BUFFER:	PBS, pH 7.4
STORAGE CONDITIONS:	Store the lyophilized protein at -20 °C to -80 °C for long term. After reconstitution, the protein solution is stable at -20 °C for 3 months, at 2-8 °C for up to 1 week.

ALTERNATE NAMES:	ACE-2, ACEH, ACE2
ACCESSION NO.:	Q9BYF1
PROTEIN GI NO.:	59272

ANTIBODIES FOR RESEARCH USE ONLY.

For additional information, visit ProSci's [Terms & Conditions Page](#).