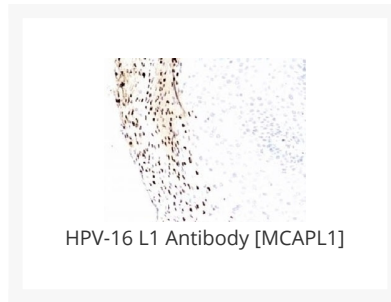




HPV-16 L1 Antibody [MCAPL1]

Cat. No.: 34-012



Ψ Specifications

HOST SPECIES:	Mouse
SPECIES REACTIVITY:	HPV-16
IMMUNOGEN:	Human papilloma virus type 16, major capsid protein L1, was used as the immunogen for the HPV-16 L1 antibody.
TESTED APPLICATIONS:	IF, IHC-P
APPLICATIONS:	Immunofluorescence: 1-2 ug/ml Immunohistochemistry (FFPE): 1-2 ug/ml for 30 min at RT (1) Titration of the HPV-16 L1 antibody may be required for optimal performance. 1. FFPE testing requires sections to be boiled in pH6 10mM citrate buffer for 10-20 minutes, followed by cooling at RT for 20 minutes, prior to staining.

Ψ Properties

PURIFICATION:	Protein G affinity chromatography
CLONALITY:	Monoclonal
ISOTYPE:	IgG2a, kappa
CONJUGATE:	Unconjugated

PHYSICAL STATE:	Liquid
BUFFER:	PBS with 0.1 mg/ml BSA and 0.05% sodium azide
CONCENTRATION:	0.2 mg/mL
STORAGE CONDITIONS:	Aliquot and Store at 2-8 °C. Avoid freeze-thaw cycles.

Additional Info

OFFICIAL SYMBOL:	L1
GENE ID:	333760
USER NOTE:	Optimal dilutions for each application to be determined by the researcher

Background and References

BACKGROUND:	Infection with specific types of HPV has been associated with an increased risk of developing cervical neoplasia. HPV types 6 and 11 have been associated with relatively benign diseases such as genital warts but types 16 and 18 are strongly associated with cervical, vaginal, and vulvar malignancies.
--------------------	--

ANTIBODIES FOR RESEARCH USE ONLY.

For additional information, visit ProSci's [Terms & Conditions Page](#).