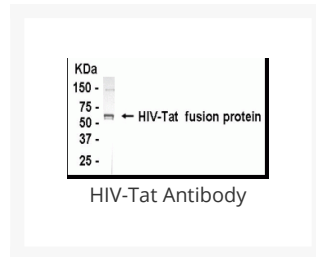




HIV-Tat Antibody

Cat. No.: XW-7254



Ψ Specifications

| | |
|------------------------------------|---|
| HOST SPECIES: | Chicken |
| SPECIES REACTIVITY: | Human, Mouse, Rat |
| IMMUNOGEN: | Full Length |
| TESTED APPLICATIONS: | WB |
| APPLICATIONS: | HIV-Tat antibody can be used for the detection of HIV-Tat by Western blot, may also work for IHC and ICC. |
| PREDICTED MOLECULAR WEIGHT: | 9.8 kDa (calculated) |

Ψ Properties

| | |
|------------------------|--|
| PURIFICATION: | Antigen affinity-purified |
| CLONALITY: | Polyclonal |
| CONJUGATE: | Unconjugated |
| PHYSICAL STATE: | Liquid |
| BUFFER: | Phosphate-Buffered Saline. No preservatives added. |
| CONCENTRATION: | 1 mg/mL |

| | |
|----------------------------|--|
| STORAGE CONDITIONS: | HIV-Tat antibody can be stored at 4° C for short term (weeks). Long term storage should be at -20° C. As with all antibodies care should be taken to avoid repeated freeze thaw cycles. Antibodies should not be exposed to prolonged high temperatures. |
|----------------------------|--|

Additional Info

| | |
|-------------------------|--|
| OFFICIAL SYMBOL: | tat |
| ALTERNATE NAMES: | Protein Tat, Transactivating regulatory protein, |
| ACCESSION NO.: | NP_057853.1 |
| PROTEIN GI NO.: | 9629358 |
| GENE ID: | 155871 |
| USER NOTE: | Optimal dilutions for each application to be determined by the researcher. |

Background and References

| | |
|--------------------|---|
| BACKGROUND: | Chicken polyclonal IgY Antibodies against HIV-1 tat protein, antigen affinity-purified. Human immunodeficiency virus type 1 protein. Viral transcriptional regulator; viral regulatory protein required for virus replication; transactivates the viral LTR promoter through interactions with cellular transcription factors; associated with pathogenic effects of the virus. |
|--------------------|---|

ANTIBODIES FOR RESEARCH USE ONLY.

For additional information, visit ProSci's [Terms & Conditions Page](#).