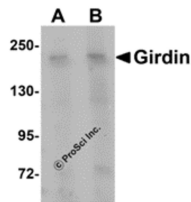


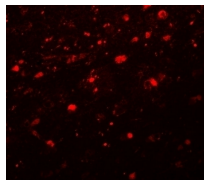


Girdin Antibody

Cat. No.: 5545



Western blot analysis of Girdin in rat brain tissue lysate with Girdin antibody at (A) 1 and (B) 2 μ g/mL.



Immunofluorescence of Girdin in human brain tissue with Girdin antibody at 20 μ g/mL.

Ψ Specifications

HOST SPECIES:	Rabbit
SPECIES REACTIVITY:	Human, Mouse, Rat
IMMUNOGEN:	Girdin antibody was raised against a 16 amino acid synthetic peptide from near the carboxy terminus human Girdin. The immunogen is located within the last 50 amino acids of Girdin.
TESTED APPLICATIONS:	ELISA, IF, WB
APPLICATIONS:	Girdin antibody can be used for detection of Girdin by Western blot at 1 - 2 μ g/mL. For immunofluorescence start at 20 μ g/mL. Antibody validated: Western Blot in rat samples and Immunofluorescence in human samples. All other applications and species not yet tested.

POSITIVE CONTROL:	1) Cat. No. 1463 - Rat Brain Tissue Lysate
	2) Cat. No. 10-301 - Human Brain Tissue Slide

Ψ Properties

PURIFICATION:	Girdin Antibody is affinity chromatography purified via peptide column.
CLONALITY:	Polyclonal
ISOTYPE:	IgG
CONJUGATE:	Unconjugated
PHYSICAL STATE:	Liquid
BUFFER:	Girdin Antibody is supplied in PBS containing 0.02% sodium azide.
CONCENTRATION:	1 mg/mL
STORAGE CONDITIONS:	Girdin antibody can be stored at 4 °C for three months and -20 °C, stable for up to one year. As with all antibodies care should be taken to avoid repeated freeze thaw cycles. Antibodies should not be exposed to prolonged high temperatures.

Ψ Additional Info

OFFICIAL SYMBOL:	CCDC88A
ALTERNATE NAMES:	Girdin Antibody: APE, GIV, GRDN, HkRP1, GIRDIN, KIAA1212, APE, Girdin, Akt phosphorylation enhancer
ACCESSION NO.:	NP_060554
PROTEIN GI NO.:	50897852
GENE ID:	55704
USER NOTE:	Optimal dilutions for each application to be determined by the researcher.

Ψ Background and References

BACKGROUND:	Girdin Antibody: Girdin is a Galpha-interacting protein that can enhance the activation of the protein kinase Akt, remodel the actin cytoskeleton, and is thought to be involved in the regulation of cell migration and cancer metastasis. It has recently been shown that Girdin interacts with Disrupted-in-Schizophrenia 1 (DISC1), a susceptibility gene for major psychiatric disorders. DISC1 is thought to be involved in the migration, positioning and differentiation of dentate granule cells (DGCs) during development; depletion of Girdin or blocking the Girdin-DISC1 interaction results in defects in axonal sprouting in the CA3 region of the hippocampus and overextended migration of mispositioning of DGCs, suggesting the Girdin plays a role in postnatal neurogenesis in the dentate gyrus.
--------------------	--

REFERENCES:	1) Le-Niculescu H, Niesman I, Fischer T, et al. Identification and characterization of GIV, a novel Galpha i/s-interacting protein found on COPI, endoplasmic reticulum-Golgi transport vesicles. J. Biol. Chem.2005; 280:22012-20.
	2) Anai M, Shojima N, Katagiri H, et al. A novel protein kinase B (PKB)/Akt-binding protein enhances PKB kinase activity and regulates DNA synthesis. J. Biol. Chem.2005; 280:18525-35.
	3) Enomoto A, Murakami H, Asai N, et al. Akt/PKB regulated actin organization and cell motility via Girdin/APE. Dev. Cell2005; 9:389-402.
	4) Enomoto A, Asai N, Namba T, et al. Roles of disrupted-in-schizophrenia 1-interacting protein girdin in postnatal development of the dentate gyrus. Neuron2009; 63:774-87.

ANTIBODIES FOR RESEARCH USE ONLY.

For additional information, visit ProSci's [Terms & Conditions Page](#).