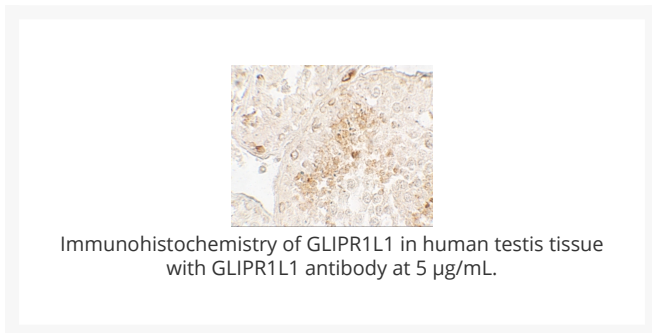
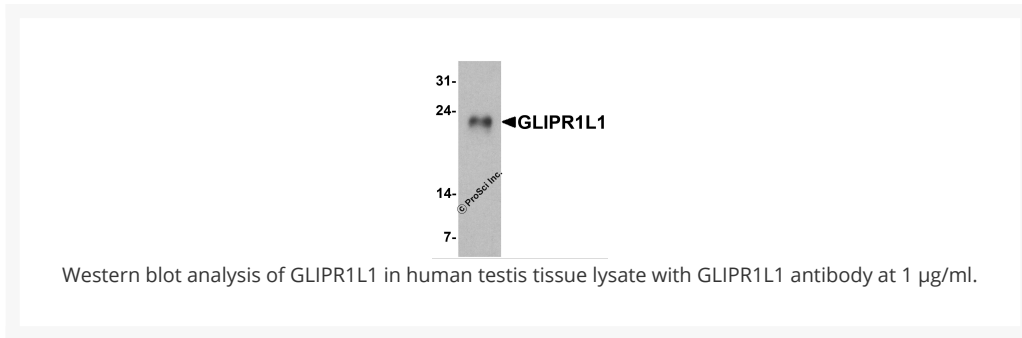




GLIPR1L1 Antibody

Cat. No.: 7625



Ψ Specifications

HOST SPECIES:	Rabbit
SPECIES REACTIVITY:	Human
IMMUNOGEN:	GLIPR1L1 antibody was raised against an 18 amino acid peptide near the amino terminus of human GLIPR1L1 . The immunogen is located within amino acids 20 - 70 of GLIPR1L1.
TESTED APPLICATIONS:	ELISA, IF, IHC-P, WB

APPLICATIONS:	<p>GLIPR1L1 antibody can be used for detection of GLIPR1L1 by Western blot at 1 - 2 µg/ml. Antibody can also be used for Immunohistochemistry starting at 5 µg/mL. For immunofluorescence start at 20 µg/mL.</p> <p>Antibody validated: Western Blot in human samples; Immunohistochemistry in human samples and Immunofluorescence in human samples. All other applications and species not yet tested.</p>
SPECIFICITY:	GLIPR1L1 antibody is human specific. At least two isoforms of GLIPR1L1 are known to exist; this antibody will detect both isoforms. This antibody is predicted to not cross-react with other GLIPR or GLIPR-like proteins.
POSITIVE CONTROL:	1) Cat. No. 1313 - Human Testis Tissue Lysate
	2) Cat. No. 11-701 - Human Testis Tissue Slide
PREDICTED MOLECULAR WEIGHT:	<p>Predicted: 26 kDa</p> <p>Observed: 23 kDa</p>

Ψ Properties

PURIFICATION:	GLIPR1L1 antibody is affinity chromatography purified via peptide column.
CLONALITY:	Polyclonal
ISOTYPE:	IgG
CONJUGATE:	Unconjugated
PHYSICAL STATE:	Liquid
BUFFER:	GLIPR1L1 antibody is supplied in PBS containing 0.02% sodium azide.
CONCENTRATION:	1 mg/mL
STORAGE CONDITIONS:	GLIPR1L1 antibody can be stored at 4 °C for three months and -20 °C, stable for up to one year.

Ψ Additional Info

OFFICIAL SYMBOL:	GLIPR1L1
ALTERNATE NAMES:	GLIPR1L1 Antibody: PRO7434, ALKN2972, GLIPR1-like protein 1
ACCESSION NO.:	NP_689992
PROTEIN GI NO.:	22749527
GENE ID:	256710
USER NOTE:	Optimal dilutions for each application to be determined by the researcher.

Ψ Background and References

BACKGROUND:	The GLIPR1-like 1 protein (GLIPR1L1) gene is part of a p53 target gene cluster that includes the related proteins GLIPR1 and GLIPR1L2 (1). GLIPR1L1 is similar to both the pathogenesis-related protein (PR) superfamily and the cysteine-rich secretory protein (CRISP) family (2). GLIPR1 is a tumor suppressor whose expression is regulated by p53 (3). Unlike GLIPR1, GLIPR1L1 is expressed primarily in the testis and is thought to be involved in the binding of sperm to the oocyte complex (4).
REFERENCES:	1) Ren C, Ren CH, Li L, et al. Identification and characterization of RTVP1/GLIPR1-like genes, a novel p53 target gene cluster. <i>Genomics</i> 2006; 88:163-72.
	2) Murphy EV, Zhang Y, Zhu W, et al. The human glioma pathogenesis-related protein is structurally related to pathogenesis-related proteins and its gene is expressed specifically in brain tumors. <i>Gene</i> 1995; 159:131-5.
	3) Ren C, Li L, Yang G, et al. RTVP-1, a tumor suppressor inactivated by methylation in prostate cancer. <i>Cancer Res.</i> 2004; 64:969-76.
	4) Gibbs GM, Lo JC, Nixon B, et al. Glioma pathogenesis-related 1-like 1 is testis enriched, dynamically modified, and redistributed during male germ cell maturation and has a potential role in sperm-oocyte binding. <i>Endocrinology</i> 2010; 151:2332-42.

ANTIBODIES FOR RESEARCH USE ONLY.

For additional information, visit ProSci's [Terms & Conditions Page](#).