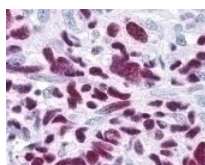




# GLI3 Antibody

Cat. No.: 49-600



GLI3 Antibody

## Ψ Specifications

<b>HOST SPECIES:</b>	Rabbit
<b>SPECIES REACTIVITY:</b>	Chicken, Chimpanzee, Dog, Human, Squirrel monkey, Xenopus
<b>IMMUNOGEN:</b>	GLI3 antibody was raised against amino acids 41-57 of GLI3 (Human).
<b>TESTED APPLICATIONS:</b>	ELISA, IHC, WB
<b>APPLICATIONS:</b>	GLI3 antibody can be used in immunohistochemistry starting at 5 µg/mL, and immunofluorescence.

## Ψ Properties

<b>PURIFICATION:</b>	Immunoaffinity Chromatography
<b>CLONALITY:</b>	Polyclonal
<b>CONJUGATE:</b>	Unconjugated
<b>PHYSICAL STATE:</b>	Liquid
<b>BUFFER:</b>	0.02 M potassium phosphate, 0.15 M sodium chloride, pH 7.2, 0.1% sodium azide.
<b>CONCENTRATION:</b>	1 mg/ml
<b>STORAGE CONDITIONS:</b>	Short term: 4 °C. Long term: Store at -20 °C. Avoid freeze-thaw cycles.

## Additional Info

---

<b>OFFICIAL SYMBOL:</b>	GLI3
<b>ALTERNATE NAMES:</b>	GLI3, ACLS, GCPS, GLI-Kruppel family member GLI3, GLI3 full length protein, GLI3-190, GLI family zinc finger 3, Gli-3, GLI3FL, PAP-A, PAPA1, PHS, PPDIV, Transcriptional activator GLI3, PAPA, PAPB, GLI3 form of 190 kDa, Oncogene GLI3, Zinc finger protein GLI3
<b>ACCESSION NO.:</b>	P10071
<b>PROTEIN GI NO.:</b>	269849770
<b>GENE ID:</b>	2737
<b>USER NOTE:</b>	Optimal dilutions for each application to be determined by the researcher.

## Background and References

---

<b>BACKGROUND:</b>	GLI3 Antibody
--------------------	---------------

---

### **ANTIBODIES FOR RESEARCH USE ONLY.**

For additional information, visit ProSci's [Terms & Conditions Page](#).