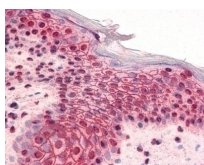




# GLI2 Antibody

Cat. No.: 51-129



GLI2 Antibody

## $\Psi$ Specifications

<b>HOST SPECIES:</b>	Rabbit
<b>SPECIES REACTIVITY:</b>	Chimpanzee, Human
<b>IMMUNOGEN:</b>	Amino acids 46-60 of human Gli-2 (isoform a).
<b>TESTED APPLICATIONS:</b>	ELISA, IHC, WB
<b>APPLICATIONS:</b>	GLI2 antibody can be used in ELISA starting at 1:000 - 1:1000, and immunohistochemistry starting at 10 $\mu$ g/mL.

## $\Psi$ Properties

<b>PURIFICATION:</b>	Immunoaffinity Chromatography
<b>CLONALITY:</b>	Polyclonal
<b>CONJUGATE:</b>	Unconjugated
<b>PHYSICAL STATE:</b>	Liquid
<b>BUFFER:</b>	0.02 M potassium phosphate, 0.15 M sodium chloride, pH 7.2, 0.01% sodium azide.
<b>CONCENTRATION:</b>	1 mg/ml
<b>STORAGE CONDITIONS:</b>	Short term: 4 °C. Long term: Store at -20 °C. Avoid freeze-thaw cycles.

## Additional Info

---

<b>OFFICIAL SYMBOL:</b>	GLI2
<b>ALTERNATE NAMES:</b>	GLI2, GLI-Kruppel family member GLI2, HPE9, Gli-2, Oncogene GLI2, Tax helper protein 2, THP, Zinc finger protein GLI2, Tax helper protein, THP2, GLI family zinc finger 2, Tax helper protein 1, THP1
<b>ACCESSION NO.:</b>	P10070
<b>PROTEIN GI NO.:</b>	215274258
<b>GENE ID:</b>	2736
<b>USER NOTE:</b>	Optimal dilutions for each application to be determined by the researcher.

## Background and References

---

<b>BACKGROUND:</b>	GLI2 Antibody
--------------------	---------------

---

### **ANTIBODIES FOR RESEARCH USE ONLY.**

For additional information, visit ProSci's [Terms & Conditions Page](#).