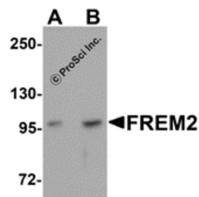


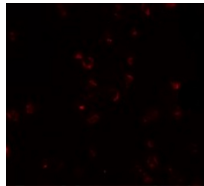


FREM2 Antibody

Cat. No.: 5831



Western blot analysis of FREM2 in A-20 cell lysate with FREM2 antibody at (A) 0.5 and (B) 1 µg/mL.



Immunofluorescence of FREM2 in A20 cells with FREM2 antibody at 20 µg/mL.

Ψ Specifications

HOST SPECIES:	Rabbit
SPECIES REACTIVITY:	Human, Mouse
IMMUNOGEN:	FREM2 antibody was raised against a 19 amino acid synthetic peptide near the center of human FREM2. The immunogen is located within amino acids 1920 - 1970 of FREM2.
TESTED APPLICATIONS:	ICC, IF

APPLICATIONS:	FREM2 antibody was raised against a 19 amino acid peptide near the center of human FREM2. Antibody can also be used for immunocytochemistry starting at 20 µg/mL. For immunofluorescence start at 20 µg/mL. Antibody validated: Western Blot in mouse samples; Immunocytochemistry in mouse samples and Immunofluorescence in mouse samples. All other applications and species not yet tested.
POSITIVE CONTROL:	1) Cat. No. 1288 - A20 Cell Lysate
	2) Cat. No. 17-208 - A-20 Cell Slide

Ψ Properties

PURIFICATION:	FREM2 Antibody is affinity chromatography purified via peptide column.
CLONALITY:	Polyclonal
ISOTYPE:	IgG
CONJUGATE:	Unconjugated
PHYSICAL STATE:	Liquid
BUFFER:	FREM2 Antibody is supplied in PBS containing 0.02% sodium azide.
CONCENTRATION:	1 mg/mL
STORAGE CONDITIONS:	FREM2 antibody can be stored at 4°C for three months and -20°C, stable for up to one year. As with all antibodies care should be taken to avoid repeated freeze thaw cycles. Antibodies should not be exposed to prolonged high temperatures.

Ψ Additional Info

OFFICIAL SYMBOL:	FREM2
ALTERNATE NAMES:	FREM2 Antibody: FRAS1-related extracellular matrix protein 2, ECM3 homolog
ACCESSION NO.:	NP_997244
PROTEIN GI NO.:	79749430
GENE ID:	341640
USER NOTE:	Optimal dilutions for each application to be determined by the researcher.

Ψ Background and References

BACKGROUND:	FREM2 Antibody: FREM2 is a member of the FRAS1-related extracellular matrix protein family and like FREM1, mutations in the FREM2 gene are associated with Fraser syndrome. FREM2 localizes to the basement membrane, forming a ternary complex that plays a role in epidermal-dermal interactions during morphogenetic processes and is thought to be required for maintaining the integrity of the skin epithelium and the differentiated state of renal epithelia. The FREM2 gene is one of several genes whose transcription is affected by TFAP2C, a transcription factor involved in mammary development, differentiation, and oncogenesis.
REFERENCES:	1) Jadjeda S, Smyth I, Pitera JE, et al. Identification of a new gene mutated in Fraser syndrome and mouse myelencephalic blebs. <i>Nat. Genet.</i> 2005; 37:520-5.
	2) Pavlakis E, Makrygiannis AK, Chiokati R, et al. Differential localization profile of Fras1/Frem proteins in epithelial basement membranes of newborn and adult mice. <i>Histochem. Cell Biol.</i> 2008; 130:785-93.
	3) Timmer JR, Mak TW, Manova K, et al. Tissue morphogenesis and vascular stability require the Frem2 protein, product of the mouse myelencephalic blebs gene. <i>Proc. Natl. Acad. Sci. USA</i> 2005; 102:11746-50.
	4) Woodfield GW, Chen Y, Bair TB, et al. Identification of primary gene targets of TFAP2C in hormone responsive breast carcinoma cells. <i>Genes Chromosomes Cancer</i> 2010; epub.

ANTIBODIES FOR RESEARCH USE ONLY.

For additional information, visit ProSci's [Terms & Conditions Page](#).