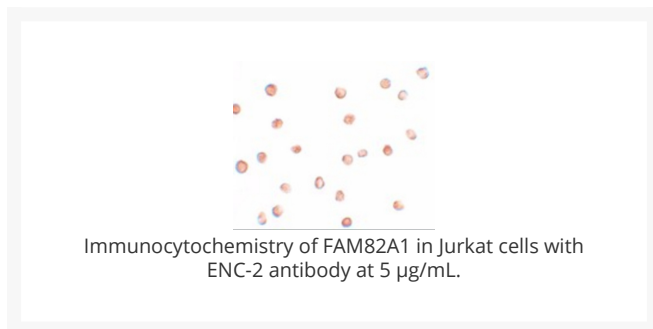
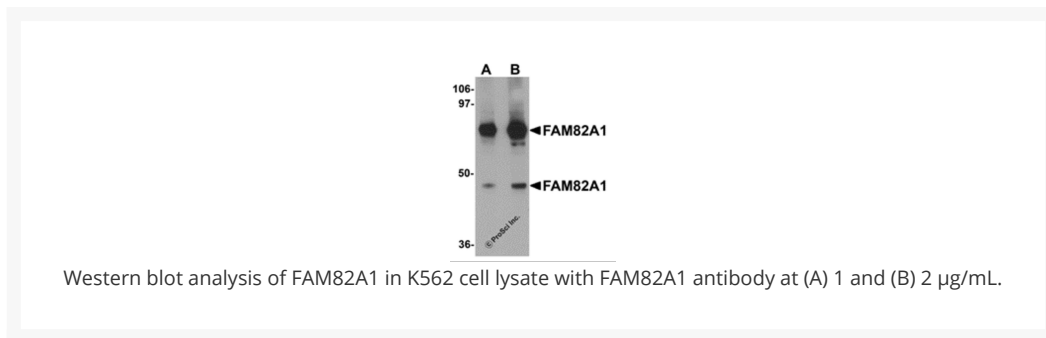




FAM82A1 Antibody

Cat. No.: 5697



Ψ Specifications

HOST SPECIES:	Chicken
SPECIES REACTIVITY:	Human, Mouse, Rat
HOMOLOGY:	Predicted species reactivity based on immunogen sequence: Bovine: (94%)
IMMUNOGEN:	FAM82A1 antibody was raised against a 16 amino acid synthetic peptide near the amino terminus of human FAM82A1. The immunogen is located within amino acids 140 - 190 of FAM82A1.
TESTED APPLICATIONS:	ELISA, ICC, IF, WB

APPLICATIONS:	FAM82A1 antibody can be used for detection of FAM82A1 by Western blot at 1 - 2 µg/mL. Antibody can also be used for immunocytochemistry starting at 5 µg/mL. For immunofluorescence start at 20 µg/mL. Antibody validated: Western Blot in human samples; Immunocytochemistry in human samples and Immunofluorescence in human samples. All other applications and species not yet tested.
POSITIVE CONTROL:	1) Cat. No. 1204 - K562 Cell Lysate
	2) Cat. No. 17-005 - Jurkat Cell Slide
	3) Cat. No. 17-004 - K-562 Cell Slide

Ψ Properties

PURIFICATION:	FAM82A1 Antibody is affinity chromatography purified via peptide column.
CLONALITY:	Polyclonal
ISOTYPE:	IgY
CONJUGATE:	Unconjugated
PHYSICAL STATE:	Liquid
BUFFER:	FAM82A1 Antibody is supplied in PBS containing 0.02% sodium azide.
CONCENTRATION:	1 mg/mL
STORAGE CONDITIONS:	FAM82A1 antibody can be stored at 4 °C for three months and -20 °C, stable for up to one year. As with all antibodies care should be taken to avoid repeated freeze thaw cycles. Antibodies should not be exposed to prolonged high temperatures.

Ψ Additional Info

OFFICIAL SYMBOL:	FAM82A1
ALTERNATE NAMES:	FAM82A1 Antibody: RMD2, RMD4, RMD-2, FAM82A, BLOCK18, FAM82A1, PRO34163, PYST9371, UNQ9371/PRO34163, Regulator of microtubule dynamics protein 2, Protein FAM82A1
ACCESSION NO.:	NP_653314
PROTEIN GI NO.:	283046686
GENE ID:	151393
USER NOTE:	Optimal dilutions for each application to be determined by the researcher.

Ψ Background and References

BACKGROUND:	FAM82A1 Antibody: The human protein FAM82A1, also known as regulator of microtubule dynamics 2 (RMD2), was one of three proteins identified as related to a family of microtubule-associated proteins in <i>C. elegans</i> . FAM82A1 contains multiple coiled-coil domains and localize to the spindle microtubules and spindle poles during cell division. During interphase, RMD2 localizes to the cytoplasm with protein observed in the microtubule lattice and perinuclear region.
REFERENCES:	1) Oishi K, Okanu H, and Sawa H. RMD-1, a novel microtubule-associated protein, functions in chromosome segregation in <i>Caenorhabditis elegans</i> . <i>J. Cell Biol.</i> 2007; 179:1149-62.

ANTIBODIES FOR RESEARCH USE ONLY.

For additional information, visit ProSci's [Terms & Conditions Page](#).