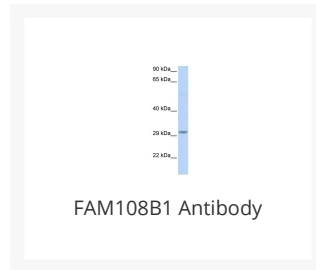




FAM108B1 Antibody

Cat. No.: 27-098



Ψ Specifications

HOST SPECIES:	Rabbit
SPECIES REACTIVITY:	Human, Mouse, Rat
IMMUNOGEN:	Antibody produced in rabbits immunized with a synthetic peptide corresponding a region of human FAM108B1.
TESTED APPLICATIONS:	ELISA, WB
APPLICATIONS:	FAM108B1 antibody can be used for detection of FAM108B1 by ELISA at 1:312500. FAM108B1 antibody can be used for detection of FAM108B1 by western blot at 1 µg/mL, and HRP conjugated secondary antibody should be diluted 1:50,000 - 100,000.
POSITIVE CONTROL:	1) Cat. No. XBL-10123 - Fetal Brain Tissue Lysate
PREDICTED MOLECULAR WEIGHT:	32 kDa

Ψ Properties

PURIFICATION:	Antibody is purified by peptide affinity chromatography method.
CLONALITY:	Polyclonal
CONJUGATE:	Unconjugated
PHYSICAL STATE:	Liquid

BUFFER:	Purified antibody supplied in 1x PBS buffer with 0.09% (w/v) sodium azide and 2% sucrose.
CONCENTRATION:	batch dependent
STORAGE CONDITIONS:	For short periods of storage (days) store at 4 °C. For longer periods of storage, store FAM108B1 antibody at -20 °C. As with any antibody avoid repeat freeze-thaw cycles.

Additional Info

OFFICIAL SYMBOL:	ABHD17B
ALTERNATE NAMES:	FAM108B1, C9orf77, CGI-67, RP11-409O11.2, FAM108B1
ACCESSION NO.:	NP_057098
PROTEIN GI NO.:	71051600
GENE ID:	51104
USER NOTE:	Optimal dilutions for each application to be determined by the researcher.

Background and References

BACKGROUND:	FAM108B1 belongs to the AB hydrolase superfamily.fAM108 family. The exact function of FAM108B1 remains unknown.
REFERENCES:	1) Humphray, S.J., (2004) Nature 429 (6990), 369-374.

ANTIBODIES FOR RESEARCH USE ONLY.

For additional information, visit ProSci's [Terms & Conditions Page](#).