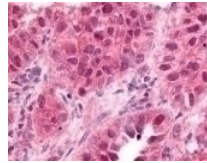




Early Growth Response 1 Antibody

Cat. No.: 49-371



Early Growth Response 1 Antibody

Ψ Specifications

HOST SPECIES:	Rabbit
SPECIES REACTIVITY:	Chimpanzee, Human, Mouse
IMMUNOGEN:	Early Growth Response 1 antibody was raised against amino acids 94 - 108 of Early Growth Response 1 (Human).
TESTED APPLICATIONS:	ELISA, IHC, WB
APPLICATIONS:	Early Growth Response 1 antibody can be used in ELISA, Western Blot starting at 2 - 4 µg/mL, immunohistochemistry starting at 5 µg/mL, and immunofluorescence.

Ψ Properties

PURIFICATION:	Immunoaffinity Chromatography
CLONALITY:	Polyclonal
CONJUGATE:	Unconjugated
PHYSICAL STATE:	Liquid
BUFFER:	0.02 M potassium phosphate, 0.15 M sodium chloride, pH 7.2, 0.01% sodium azide.
CONCENTRATION:	0.93 mg/ml
STORAGE CONDITIONS:	Store Early Growth Response 1 antibody at 4 °C or -20 °C. As with all antibodies avoid freeze/thaw cycles.

OFFICIAL SYMBOL:	EGR1
ALTERNATE NAMES:	EGR1, AT225, Early growth response 1, G0S30, KROX24, NGFIA, KROX-24, TIS8, ZIF-268, ZIF268, Zinc finger protein Krox-24, EGR-1, NGFI-A, Transcription factor ETR103, Transcription factor Zif268, Zinc finger protein 225
ACCESSION NO.:	P18146
PROTEIN GI NO.:	119242
GENE ID:	1958
USER NOTE:	Optimal dilutions for each application to be determined by the researcher.

Background and References

BACKGROUND:	Early Growth Response 1 Antibody
--------------------	----------------------------------

ANTIBODIES FOR RESEARCH USE ONLY.

For additional information, visit ProSci's [Terms & Conditions Page](#).