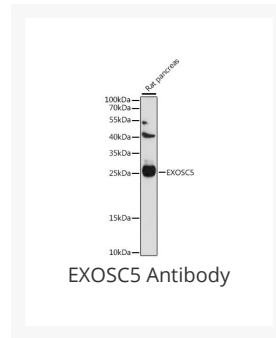




EXOSC5 Antibody

Cat. No.: 16-290



Ψ Specifications

HOST SPECIES:	Rabbit
SPECIES REACTIVITY:	Rat
IMMUNOGEN:	Recombinant fusion protein containing a sequence corresponding to amino acids 1-235 of human EXOSC5 (NP_064543.3).
TESTED APPLICATIONS:	WB
APPLICATIONS:	WB: ,1:500 - 1:2000
POSITIVE CONTROL:	1) Rat pancreas
PREDICTED MOLECULAR WEIGHT:	Observed: 25kDa

Ψ Properties

PURIFICATION:	Affinity purification
CLONALITY:	Polyclonal
ISOTYPE:	IgG
CONJUGATE:	Unconjugated
PHYSICAL STATE:	Liquid

BUFFER:	PBS with 0.02% sodium azide, 50% glycerol, pH7.3.
STORAGE CONDITIONS:	Store at -20 °C. Avoid freeze / thaw cycles.

Additional Info

OFFICIAL SYMBOL:	EXOSC5
ALTERNATE NAMES:	RRP41B, RRP46, Rrp46p, hRrp46p, p12B, exosome complex component RRP46, chronic myelogenous leukemia tumor antigen 28, exosome complex exonuclease RRP46, exosome component Rrp46, ribosomal RNA-processing protein 46
GENE ID:	56915
USER NOTE:	Optimal dilutions for each application to be determined by the researcher.

ANTIBODIES FOR RESEARCH USE ONLY.

For additional information, visit ProSci's [Terms & Conditions Page](#).