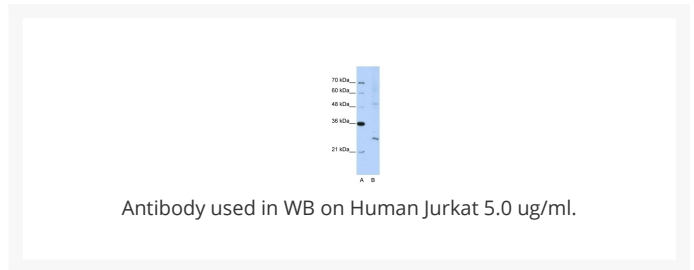
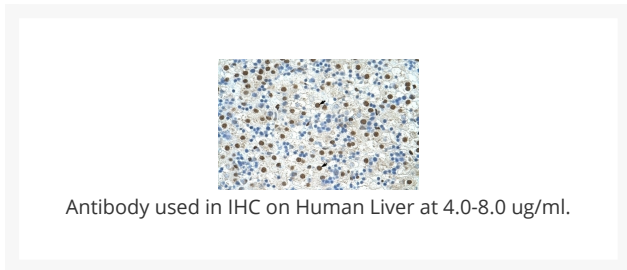




EXOSC4 Antibody

Cat. No.: 29-451



Ψ Specifications

HOST SPECIES:	Rabbit
SPECIES REACTIVITY:	Dog, Human, Mouse, Rat
IMMUNOGEN:	Antibody produced in rabbits immunized with a synthetic peptide corresponding a region of human EXOSC4.
TESTED APPLICATIONS:	ELISA, IHC, WB
APPLICATIONS:	EXOSC4 antibody can be used for detection of EXOSC4 by ELISA at 1:62500. EXOSC4 antibody can be used for detection of EXOSC4 by western blot at 5.0 µg/mL, and HRP conjugated secondary antibody should be diluted 1:50,000 - 100,000.
POSITIVE CONTROL:	1) Cat. No. 1205 - Jurkat Cell Lysate
PREDICTED MOLECULAR WEIGHT:	27 kDa

PURIFICATION:	Antibody is purified by protein A chromatography method.
CLONALITY:	Polyclonal
CONJUGATE:	Unconjugated
PHYSICAL STATE:	Liquid
BUFFER:	Purified antibody supplied in 1x PBS buffer with 0.09% (w/v) sodium azide and 2% sucrose.
CONCENTRATION:	batch dependent
STORAGE CONDITIONS:	For short periods of storage (days) store at 4 °C. For longer periods of storage, store EXOSC4 antibody at -20 °C. As with any antibody avoid repeat freeze-thaw cycles.

Ψ Additional Info

OFFICIAL SYMBOL:	EXOSC4
ALTERNATE NAMES:	EXOSC4, SKI6, p12A, RRP41, Ski6p, RRP41A, Rrp41p, hRrp41p
ACCESSION NO.:	NP_061910
PROTEIN GI NO.:	9506689
GENE ID:	54512
USER NOTE:	Optimal dilutions for each application to be determined by the researcher.

Ψ Background and References

BACKGROUND:	EXOSC4 belongs to the RNase PH family. It is a component of the exosome 3'->5' exoribonuclease complex and is required for the 3' processing of the 7S pre-rRNA to the mature 5.8S rRNA. It has a 3'-5' exonuclease activity.
REFERENCES:	1) Oh, J.H., (2005) Mamm. Genome 16 (12), 942-954.

ANTIBODIES FOR RESEARCH USE ONLY.

For additional information, visit ProSci's [Terms & Conditions Page](#).