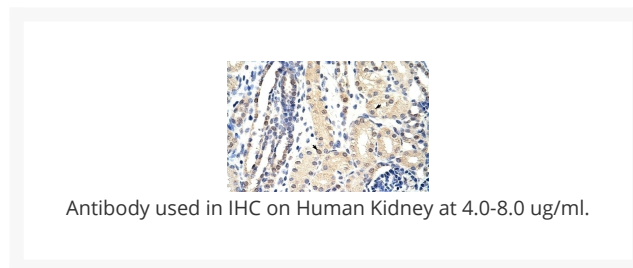
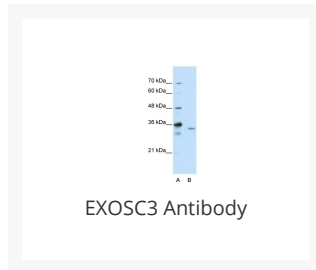




# EXOSC3 Antibody

Cat. No.: 29-427



## Ψ Specifications

<b>HOST SPECIES:</b>	Rabbit
<b>SPECIES REACTIVITY:</b>	Human
<b>IMMUNOGEN:</b>	Antibody produced in rabbits immunized with a synthetic peptide corresponding a region of human EXOSC3.
<b>TESTED APPLICATIONS:</b>	ELISA, IHC, WB
<b>APPLICATIONS:</b>	EXOSC3 antibody can be used for detection of EXOSC3 by ELISA at 1:312500. EXOSC3 antibody can be used for detection of EXOSC3 by western blot at 2.5 µg/mL, and HRP conjugated secondary antibody should be diluted 1:50,000 - 100,000.
<b>POSITIVE CONTROL:</b>	1) Cat. No. 1211 - HepG2 Cell Lysate
<b>PREDICTED MOLECULAR WEIGHT:</b>	30 kDa

<b>PURIFICATION:</b>	Antibody is purified by protein A chromatography method.
<b>CLONALITY:</b>	Polyclonal
<b>CONJUGATE:</b>	Unconjugated
<b>PHYSICAL STATE:</b>	Liquid
<b>BUFFER:</b>	Purified antibody supplied in 1x PBS buffer with 0.09% (w/v) sodium azide and 2% sucrose.
<b>CONCENTRATION:</b>	batch dependent
<b>STORAGE CONDITIONS:</b>	For short periods of storage (days) store at 4 °C. For longer periods of storage, store EXOSC3 antibody at -20 °C. As with any antibody avoid repeat freeze-thaw cycles.

## Ψ Additional Info

<b>OFFICIAL SYMBOL:</b>	EXOSC3
<b>ALTERNATE NAMES:</b>	EXOSC3, p10, PCH1B, RRP40, Rrp40p, CGI-102, hRrp-40, bA3J10.7, RP11-3J10.8
<b>ACCESSION NO.:</b>	NP_057126
<b>PROTEIN GI NO.:</b>	50511943
<b>GENE ID:</b>	51010
<b>USER NOTE:</b>	Optimal dilutions for each application to be determined by the researcher.

## Ψ Background and References

<b>BACKGROUND:</b>	EXOSC3 is component of the exosome 3'->5' exoribonuclease complex and is required for the 3' processing of the 7S pre-RNA to the mature 5.8S rRNA.
<b>REFERENCES:</b>	1) Lehner, B. (2004) Genome Res. 14 (7), 1315-1323.

### ANTIBODIES FOR RESEARCH USE ONLY.

For additional information, visit ProSci's [Terms & Conditions Page](#).